

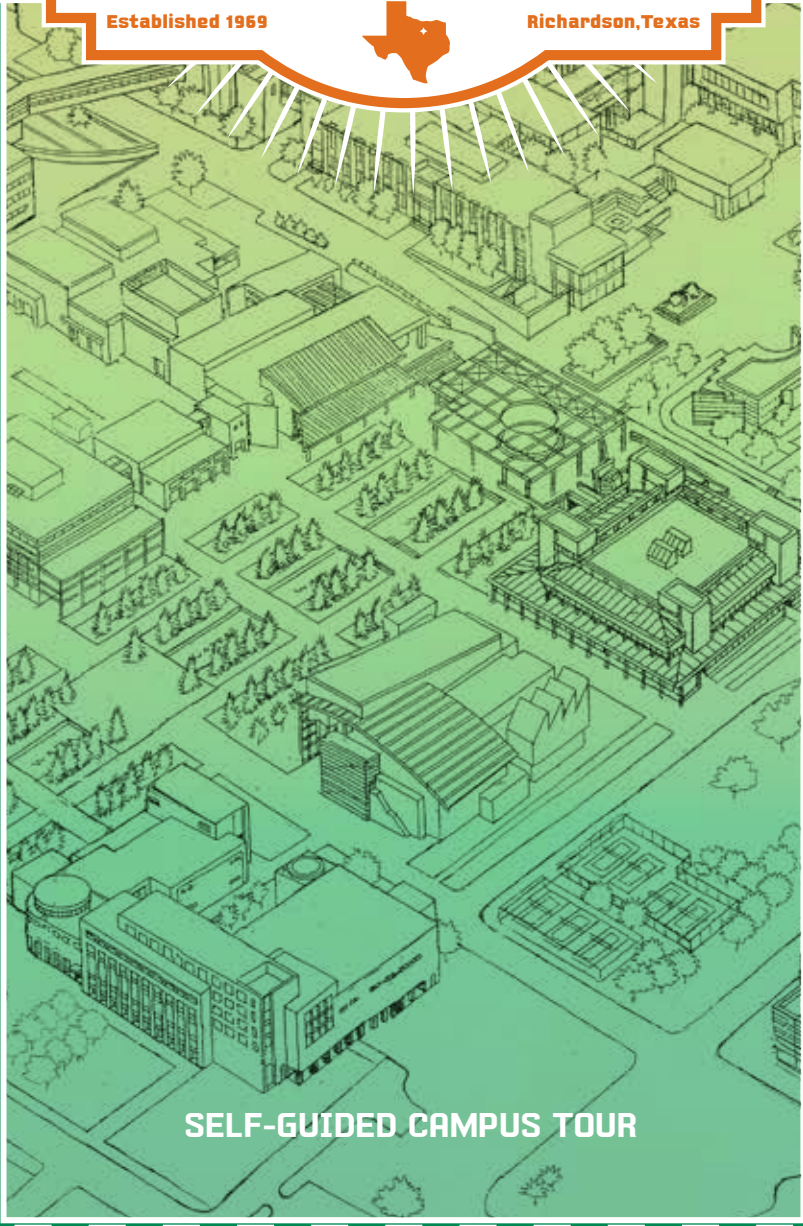


THE UNIVERSITY OF TEXAS AT DALLAS

Established 1969



Richardson, Texas



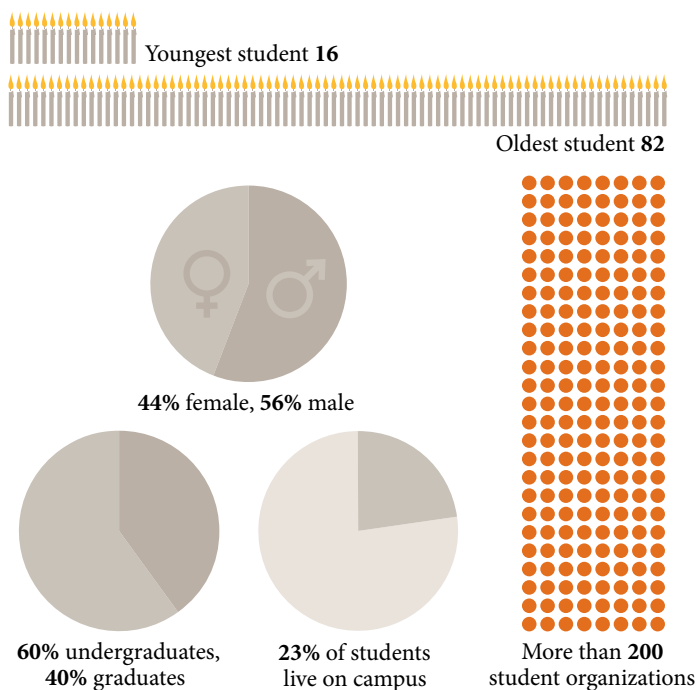
SELF-GUIDED CAMPUS TOUR

WELCOME to The University of Texas at Dallas

Explore our campus and get a first-hand sense of why UT Dallas was ranked by *Times Higher Education* as one of the top 100 universities in the world under 50 years of age.

Check out our campus facilities, from state-of-the-art academic buildings to life-sized chessboards on the mall. This guide will give you highlights of the University's most celebrated landmarks. If today's visit piques your interest, we'd be happy to provide you with more ways to connect with what UT Dallas has to offer.

By the Numbers



The University of Texas at Dallas is an innovative institution in the heart of North Texas on the path to achieving Tier One national research university status.

UT Dallas has grown since its founding in 1969 to include more than 130 degree programs in cutting-edge disciplines—from arts and technology, to audiology and brain science, to nanotechnology and other critical 21st-century fields.



Campus Highlights

Visitor Center and University Bookstore (VCB) 1

The best starting point for a campus visit is the Visitor Center and University Bookstore, where you'll find valuable information about the campus, receive visitor parking passes and learn about group, family or self-guided campus tours. The building also houses the University Bookstore, Copy Center, Technology Store and the Coffee Shop.



Activity Center (AC) 2

Attached to the south end of the VCB, the Activity Center is available to all students, faculty and staff members. It contains a fitness center, four racquetball courts, two squash courts, four basketball courts and a 25-yard swimming pool that is famous as the site of the annual Cardboard Regatta.



Student Services Building (SSB) 17

A one-stop shop for student services, the new Student Services Building houses various departments, including the Bursar's Office, Career Center, Admission and Enrollment Services, Health and Counseling Centers, Housing Operations and the Dean of Students office.



Student Union (SU) 15

The Student Union is the place for students to hang out, grab a bite to eat and relax. The Union houses several popular gathering spots that include dining facilities, a TV lounge, study area, pool tables, ping pong tables and a video arcade.



Eugene McDermott Library (MC) 6

Located in the heart of campus, the Eugene McDermott Library gives students access to more than three million catalogued books, periodicals, government documents, microforms and non-print media. The Novel Brew coffee shop on the first floor has plenty of indoor and outdoor study space. The McDermott Library is also home to the student success center and the Office of Student Success and Assessment.



Campus Housing 28

The University's newly constructed residence halls feature three-bedroom suites, recreation areas, large communal spaces, Living Learning communities and study lounges. The University Village Apartments offer traditional apartment amenities along with a sports court, swimming pool, sand volleyball court and group activities for new students. A model apartment is available for viewing during campus tours.



Key Buildings

Founders Building (F0)

The first facility built on campus, Founders Building opened in early 1964. With striking modern architecture and floor-to-ceiling windows overlooking the center of campus, the building is home to biology, biochemistry, geosciences and physics classrooms. The building also includes the Kusch Auditorium, a lecture hall named after Dr. Polykarp Kusch, a UT Dallas physics professor and the first Nobel laureate to live and teach in the Southwest.



Naveen Jindal School of Management Building (JSOM)

The Jindal School of Management is a state-of-the-art facility housing the largest of UT Dallas' seven schools. Situated along the circular main entrance to campus, the building offers two large computer labs and break-out spaces for student groups. There's a coffee shop on the first floor.



Arts and Technology Building (ATC)

Due to open in fall 2013, the ATEC Building is near the center of campus, adjacent to the library and overlooking the reflecting pools. Features of the new space include classrooms for game design, visual arts, 2D drawing and painting studios, 3D art studios, and photography and printmaking labs.



Natural Science and Engineering Research Laboratory (NSERL)

NSERL is a four-story, modular laboratory space for scientists and engineers. Both synthetic chemists who require significant fume hood space and electrical engineers who require open labs for large pieces of equipment can be found working inside this colorful building known for its glimmering shades of purple, green and blue.



- 1 Visitor Center and University Bookstore (VCB)
- 2 Activity Center (AB)
- 3 Naveen Jindal School of Management (JSOM)
- 4 Chess Plaza
- 5 Arts and Technology Building (ATC)
- 6 Eugene McDermott Library (MC)
- 7 Trellis Plaza
- 8 Cecil and Ida Green Center (GC)
- 9 Cecil H. Green Hall (GR)
- 10 Administration Building (AD)
- 11 Eric Jonsson Academic Center (JO)
- 12 University Theatre (TH)
- 13 Founders North Building (FN)
- 14 Founders Building (FO)
- 15 Student Union (SU)
- 16 Dining Hall (DH)
- 17 Student Services Building (SSB)
- 18 Eric Jonsson School of Engineering and Computer Science (ECS)
- 19 Lloyd V. Berkner Hall (BE)
- 20 Science Learning Center (SLC)
- 21 Visual Arts Studio (AS)
- 22 Physics Office Building (PHY)
- 23 Classroom Buildings
- 24 Karl Hoblitzelle Hall (HH)
- 25 Alexander Clark Center (CN)
- 26 Waterview Park Apartments
- 27 University Village Apartments
- 28 Residence Halls
- 29 Natural Science and Engineering Research Lab (NSERL)
- 30 Callier Center Richardson (CR)
- 31 University Police
- 32 Multi-level Parking
- 33 Research and Operations Center (ROC)
- 34 Waterview Science and Technology Center (WSTC)





Key Buildings

Cecil H. Green Hall (GR)

The Green Building houses psychology and social sciences classrooms. The Green Pit, an area located on the ground level as you enter the front of the building, is a favorite place to study before class.

Science Learning Center (SLC)

The Science Learning Center is a facility for research and education in mathematics, science and engineering. The building serves as a lab to study effective teaching and learning techniques in these fields, both at the college and K-12 levels. The tile design on the exterior wall is inspired by the atomic emission spectra of gasses and human DNA as it is separated in a process called gel electrophoresis.

The Alexander Clark Center (CN)

The Alexander Clark Center, named after the former vice president for academic affairs and a one-time acting president of UT Dallas, includes one of the University's largest auditoriums.

University Theatre (TH)

The University Theatre is a 275 seat stadium-style auditorium that showcases a number of plays and performances every year, including the annual Holiday Sing, the oldest cultural tradition at UT Dallas.

Karl Hoblitzelle Hall (HH)

Hoblitzelle Hall, named after a successful vaudeville theater entrepreneur and Dallas civic leader, is the home of the School of Interdisciplinary Studies. The Hoblitzelle Foundation donated almost 300 acres of land to UT Dallas 40 years ago and continues to support the University's academic and physical growth today.

The Scenic Route

Center Mall

7

This major thoroughfare runs from the heart of campus to the circular entrance near the Visitor Center. At the north end between the Eugene McDermott Library and the Student Union, a circular pool and water-mister system has become a central gathering place for students. The nearby steps of the Union are a popular place to eat lunch, study, socialize or play music. The Union offers a variety of eateries and activities, and houses student offices such as the Center for Student Involvement, Student Government and the Media Annex, which includes UTD TV, UTD Radio and the *Mercury* student newspaper. Toward the south end of the mall, a series of linear reflecting pools and magnolia trees stretch past the Union to the Naveen Jindal School of Management.



The Patio

15

Located just off the mall, the Patio is one of the most popular spots on campus, thanks to a relaxed atmosphere and convenient location outside the Pub. The Patio's shaded outdoor tables provide a great place for coffee and conversation. A student-designed mural depicts student life at UT Dallas.



Spirit Rocks

12

How do students promote campus events, show off school spirit and even occasionally propose marriage? Answer: with a can of spray paint at the Spirit Rocks. Located between Green Hall and the University Theatre, the large Texas limestone rocks bear student messages and artwork. The rocks weigh a grand total of 12 tons.



Love Jack

11

The Love Jack, a giant red sculpture placed in front of the Erik Jonsson Academic Center (JO) in 1976, is iconic of the University's larger-than-life thinking. Originally called "Jack," the sculpture was quickly renamed the Love Jack by students who joined its original name with the name of the sculptor, Jim Love.



Rock Garden

13

UT Dallas' Rock Garden outside the Founders Building features 19 large sedimentary, metamorphic and igneous rock specimens ranging in weight from 100 pounds to nearly a ton. The oldest rock, a 3.5 billion-year-old gneiss from Wyoming, is about three-quarters of the age of the Earth. It is a sample of one of the oldest known rocks in the U.S.



Chess Plaza

4

Chess Plaza, on the south end of the mall between the Student Services Building and the Naveen Jindal School of Management, features four human-sized chessboards where students can take on the UT Dallas Chess Team. The UT Dallas Chess Team has won national and international titles and regularly represents the University in the Pan-American Intercollegiate Championship, the National Collegiate Chess League and the Final Four of Chess.



Cecil Green's Likeness

9

UT Dallas owes its existence to three visionaries who deeply valued both education and the entrepreneurial spirit: Texas Instruments founders Eugene McDermott, J. Erik Jonsson and Cecil Green. These men established the Graduate Research Center of the Southwest in 1961. In 1969, they transferred the center's assets to the State of Texas, thereby establishing UT Dallas. Green died in 2003 at age 102. His likeness, in the form of a sculpture located at Green Hall, is often visited by students at the end of the semester. Rubbing the statue is said to bring students good luck before final exams.



Good Eats on Campus

Grab a seat and a bite to eat in the Student Union at one of the following locations:

The Comet Café

15

The Comet Café offers a wide range of eateries including Subway, Chick-fil-A, Papa John's Pizza, home-style cooking and a salad bar.



The Pub

15

The Pub, in addition to housing a Starbucks café, serves burgers, salads and sandwiches. The Pub also offers pool tables, TVs and live entertainment throughout the year.



Dining Hall

16

This all-you-can-eat dining facility offers a wide selection, including home-style cuisine, vegetarian and vegan alternatives, salad and soup bar, traditional Tex-Mex, Italian pasta and pizzas, freshly baked bread and desserts.



Campus Contacts

Want to know more?

Admission/Enrollment Services

972-883-2270
utdallas.edu/enroll

Transfer Services

972-883-6147
utdallas.edu/transferservices

Athletics

972-883-4490
cometsports.utdallas.edu

Career Center

972-883-2943
utdallas.edu/career

Financial Aid/Tuition

972-883-2941
financial-aid.utdallas.edu

Housing

972-883-6391
utdallas.edu/housing

Registrar

972-883-2342
utdallas.edu/student/registrar

Scholarships

972-883-6708
utdallas.edu/scholarships

Prospective Student Tours and Events

utdallas.edu/enroll/events

Maps and Directions

utdallas.edu/maps

Create Your Own Guide

online at: utdallas.edu/guide



800 W. Campbell Rd. • Richardson, TX 75080-3021 • 972-883-2111