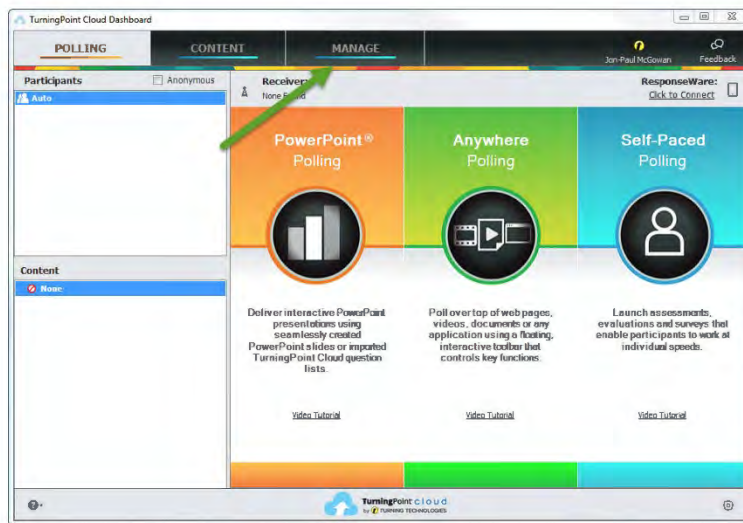
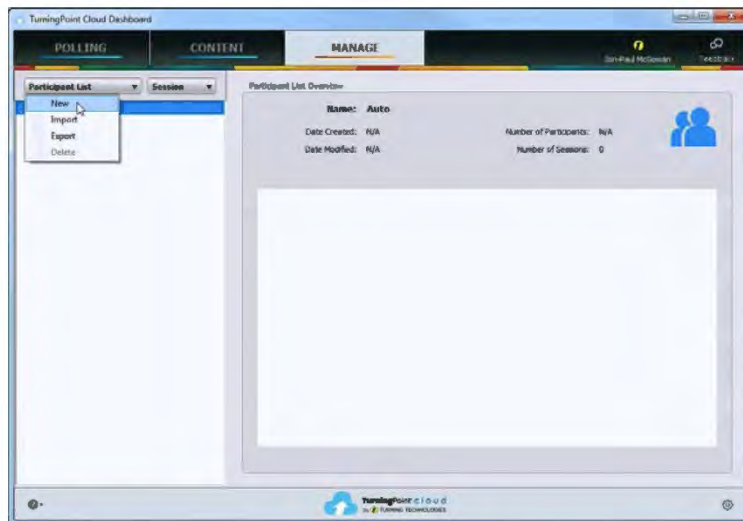


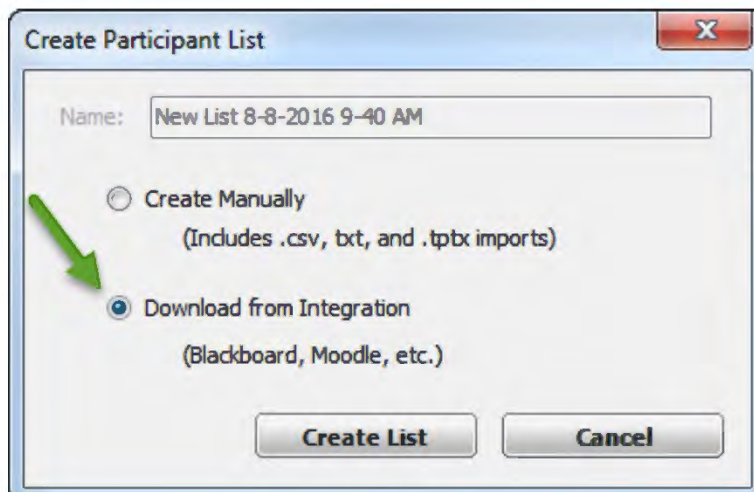
Please follow these steps to import your class roster into **Turning Point Cloud** –



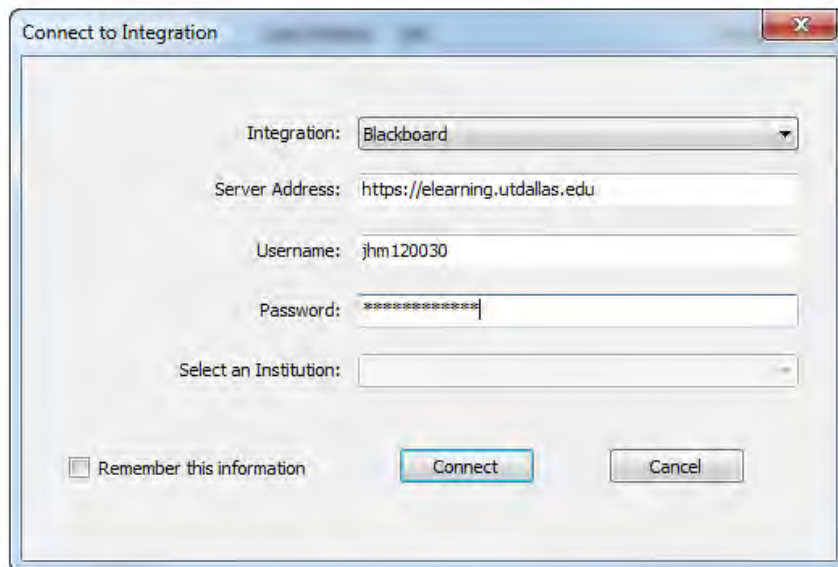
1.) From your main screen click on Manage.



2.) From the Manage Tab Click on Participant List then New.



3.) Click on Download from Integration



Connect to Integration

Integration:

Server Address:

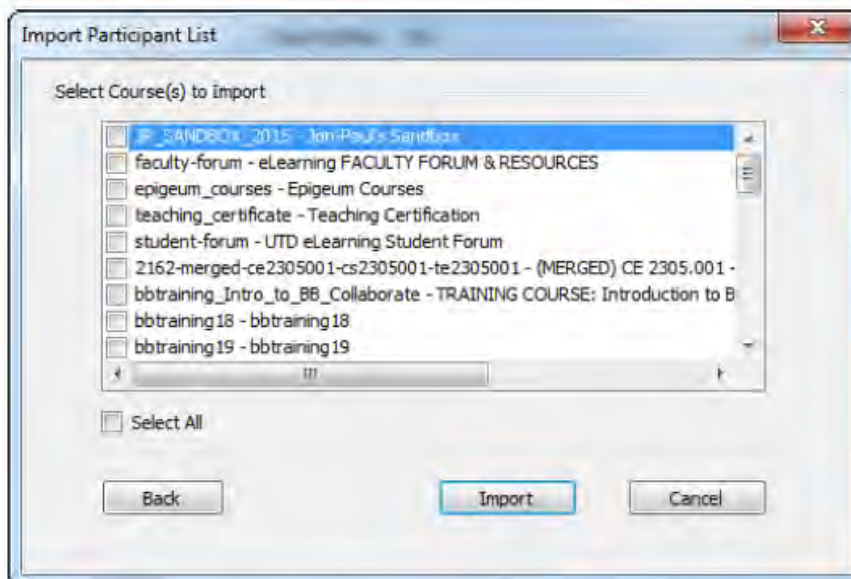
Username:

Password:

Select an Institution:

☐ Remember this information

- 4.) Enter the information requested.
- Integration: Blackboard
  - Server address: <https://elearning.utdallas.edu>
  - Username: Your NetID
  - Password: Your UTD Systems Log-In Password



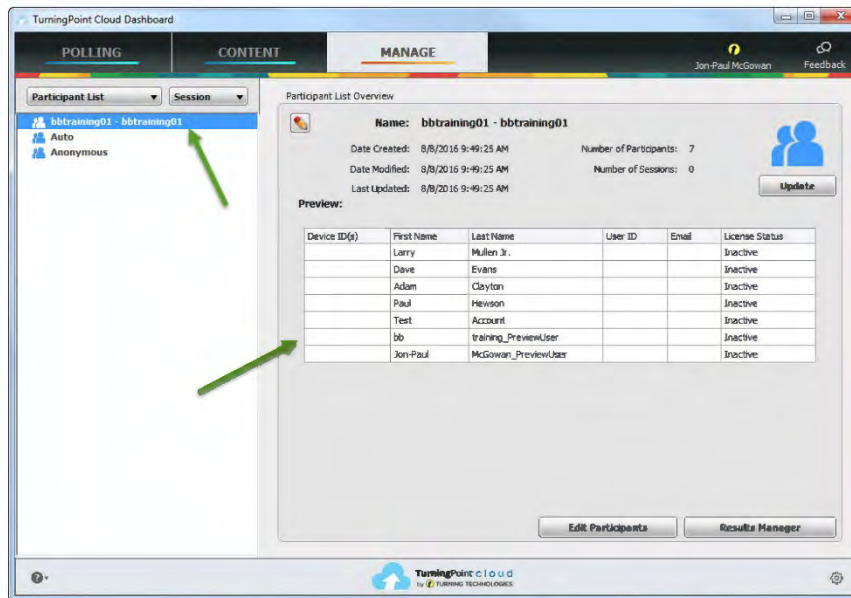
Import Participant List

Select Course(s) to import

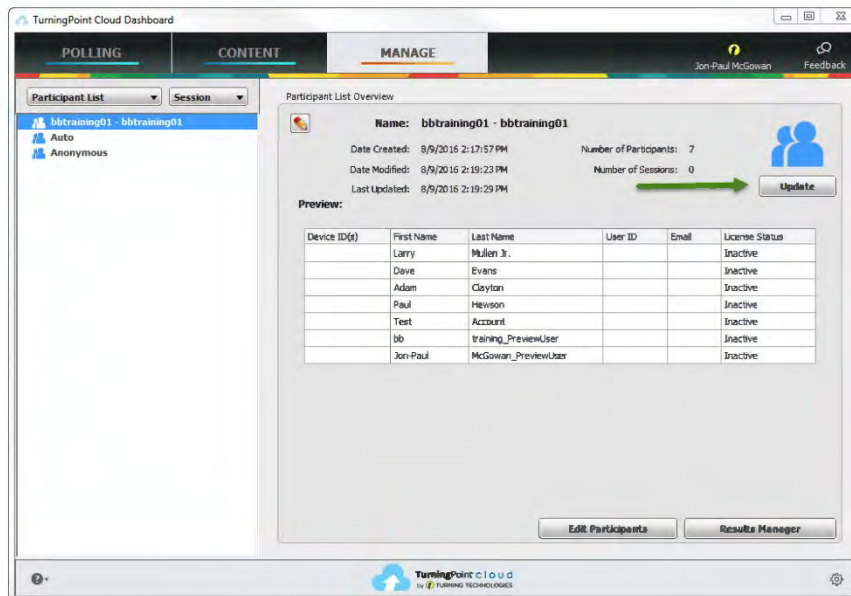
- ☒ P\_5AND00x\_2015 - Jan-Paul's Sandbox
- ☐ faculty-forum - eLearning FACULTY FORUM & RESOURCES
- ☐ epigeum\_courses - Epigeum Courses
- ☐ teaching\_certificate - Teaching Certification
- ☐ student-forum - UTD eLearning Student Forum
- ☐ 2162-merged-ce2305001-cs2305001-te2305001 - (MERGED) CE 2305.001 -
- ☐ bbtraining\_Intro\_to\_BB\_Collaborate - TRAINING COURSE: Introduction to B
- ☐ bbtraining18 - bbtraining18
- ☐ bbtraining19 - bbtraining19

☐ Select All

- 5.) Select the course, or courses, whose roster you wish to import.



6.) Your courses will be listed on the upper right and the roster will be located in the main display area.



7.) To update your roster click on the Update button and provide the same information as Step 4. You will then receive a confirmation stating whether or not users were updated.