

THE UNIVERSITY OF TEXAS  
AT DALLAS

F

A

C

T

S

CREATING THE FUTURE



As I reviewed the material assembled for this year's brochure, I was reminded of the Latin legal term, *res ipsa loquitur* — the thing speaks for itself. In other words, the facts are so obvious that there is only one simple conclusion to be drawn.

Since June, when I first became president of The University of Texas at Dallas (UTD), I've met with many audiences to describe our university's history, goals and aspirations. I generally preface my remarks by describing the university as a unique institution that has extraordinary quality and excellence. When I make those comments, I can do so knowing that they are not hyperbole or embellishment. They are simple facts based on conclusions drawn from measurable evidence that is highlighted throughout this brochure — entering freshmen with average SAT scores of 1240, outstanding faculty members that include Nobel laureates and National Academy members, and research centers that are making remarkable discoveries that change lives every day.

UTD's relatively brief history has been committed to the pursuit of excellence and the steadfast determination to maintain the highest standards of quality. Now, we are on an upward trajectory that has the potential to propel the university and the Metroplex with it to the next level of



excellence. We approach that challenge with the same enthusiasm, innovation and energy that has marked the evolution of our university throughout our history. Will we be as successful meeting this challenge as we have been meeting others in the past? *Res ipsa loquitur.*

A handwritten signature in red ink that reads "David E. Daniel". The signature is written in a cursive, flowing style.

Dr. David E. Daniel  
President  
The University of Texas at Dallas  
[www.utdallas.edu/president](http://www.utdallas.edu/president)

## OUR VISION AND MISSION

Since we were established as a cutting-edge research center nearly four decades ago, UTD has been dedicated to serving the Dallas - Fort Worth (DFW) region, the State of Texas, and beyond as an innovator in the fields of science, engineering, and business education and research. UTD has made a name for itself in these fields due to the same ambitious and innovative spirit that will help propel us forward as we strive to become one of the great universities of the world.

As a young, dynamic university, our ability to change is not inhibited by history or tradition. UTD has a brief but strong tradition of innovation and leadership with eyes always on the future. We are agile enough to evolve in response to the breakthroughs of our researchers, embrace the innovative ideas of our faculty, respond to our students' growing interest in multidisciplinary programs, and fulfill our community's need to have a nationally respected hub of intellectual capital and culture. We are in an enviable position, poised perfectly to set a new standard in the DFW region for excellence in higher education.

Naturally, a university as dynamic as ours has a progressive mission:

- ❖ To produce engaged graduates prepared for life, work and leadership
- ❖ To advance excellent educational and research programs in natural and human sciences, management, technology and the liberal and practical arts
- ❖ To transform ideas into actions that directly benefit the personal, economic, social and cultural lives of the citizens of Texas

## OUR GOALS

UTD aspires to be:

- ❖ One of the nation's best public research universities, prepared to meet the challenges of a rapidly changing, technology-driven global society
- ❖ A global force in innovative, transdisciplinary research and education in emerging areas of technology, science and learning
- ❖ A ground breaking leader in both framing and answering the questions faced by business, policy makers and the public
- ❖ A synergistic partner with local industry, government, and cultural organizations as well as local K-12 schools, community colleges and universities
- ❖ One of the most creative, innovative universities in the nation and world



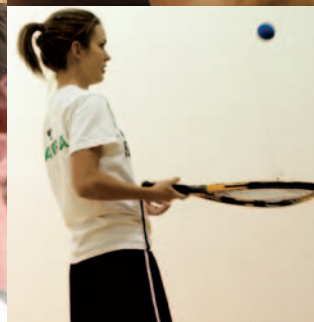
PHOTO COURTESY OF HANNAH FRANK



## THE UNIVERSITY

*UTD has achieved unwavering excellence in many areas. Consider the fact that UTD:*

- ❖ Has a world-class faculty that includes two Nobel laureates and several members of the National Academies.
- ❖ Maintains national and international reputations in core areas such as management science, audiology, brain health, computer science, digital forensics and cybercrime prevention, nanotechnology, sickle cell disease research, space science and arts and technology.
- ❖ Boasts exceptionally high average SAT scores for entering freshmen—in 2005 it was 1240, the highest of all public universities in Texas.
- ❖ Enjoyed a 61 percent enrollment increase between 1995 and 2005. The number of courses taken also more than doubled during that period.
- ❖ Offers an Executive MBA Program ranked among the top 25 in the nation and #1 in the region by *Financial Times*.
- ❖ Is one of the top universities in the nation for the number of computer science degrees awarded.
- ❖ Is a highly selective institution with a 51 percent acceptance rate. More than 41 percent of incoming freshman are in the top 10 percent of their high school class, 74 percent are in the top quarter, and 34 percent are National Merit finalists.
- ❖ Has a chess team ranked one of the top intercollegiate chess teams in the nation.
- ❖ Fields intercollegiate athletic teams in the NCAA Division III American Southwest Conference. The Comets compete in 13 sports including men's and women's soccer, basketball, cross-country, golf, tennis, men's baseball and women's softball and volleyball.
- ❖ Doesn't have a football team, but if it joined the Big 10, Pac10 or the Big 12, it would raise the academic average of each conference's freshman class.







## THE CITY: DALLAS

*UTD's excellence already speaks for itself, but when paired with the economic strength, diverse business opportunities, cosmopolitan atmosphere, and other great qualities of the DFW region, UTD has limitless potential. Consider these facts about our location:*

- ❖ DFW is the largest metropolitan area in Texas and the fifth largest metropolitan area in the country.
- ❖ The State of Texas received *Site Selection* magazine's 2005 Governor's Cup award for most job creations, and DFW was ranked second nationally for job growth. Throughout the 1990s, DFW ranked first in the nation for employment growth, adding a total of 760,600 net new jobs.
- ❖ DFW is sixth in economic output in the nation and produces one-third of the economic output of Texas. Total GDP for the DFW metropolitan area exceeds \$250 billion, placing the area 14th among all states and 19th among the world's nations in total output.
- ❖ A state-by-state overview of the high-tech industry dubs Texas the "second largest cyberstate in the nation" with a total of approximately 460,000 high-tech workers. DFW accounts for nearly one-half of that workforce.
- ❖ As of 2005, 18 Fortune 500 headquarters called DFW home, Texas was the #1 state for relocations, and DFW was the #1 metropolitan area for relocations.
- ❖ The six major public universities in DFW granted nearly 4,600 doctoral degrees in the

last decade, placing them third among similar universities in key metropolitan areas. The region also offers the largest number of college and high school educated residents of any metropolitan area in the state of Texas, and among the highest in the nation.

- ❖ The *ACCRA Cost of Living Index* consistently reports that the DFW area is one of the least expensive metropolitan markets in the nation for housing—21.6 percent below the national average.
- ❖ Dallas claims two major art districts, more than 175 museums and galleries, more than 50 professional and community theaters, and dozens of local symphony and chamber orchestras, ballet groups and opera associations.
- ❖ Dallas is one of the few areas in the nation with six major league sports teams including Cowboys football, Desperados arena football, Mavericks basketball, Rangers baseball, Stars hockey and FC Dallas soccer.
- ❖ DFW Airport is one of the nation's largest airports and offers nonstop service to virtually all major cities in the United States as well as numerous overseas gateways. Dallas Love Field provides frequent nonstop flights to all the major cities in Texas and the region.
- ❖ The rapidly expanding Dallas Area Rapid Transit (DART) provides light rail service between downtown and points north and south, and will continue expanding to connect the entire Metroplex.

*\*Statistics were extracted from Greater Dallas Chamber Report 12/05.*

## STUDENT QUALITY

25 <sup>th</sup> Percentile SAT	1120
75 <sup>th</sup> Percentile SAT	1370
Average SAT	1240
Percentage of freshmen top 10%	.41%
Acceptance rate	.51%
Average freshman HS GPA	3.56
National Merit Scholars 2005	.34

## FALL 2005 ENROLLMENT 14,480

Male	.54%
Female	.46%
Undergrad	.65%
Graduate	.35%
Full-time	.61%
Part-time	.41%
Oldest Student	.85
Youngest Student	.16

## ETHNICITIES

Anglo	.53%
Asian American	.17%
International	.13%
Hispanic	.8%
African American	.7%
Native American	.1%

- ❖ Forty percent of UTD's baccalaureates are first-generation college graduates.
- ❖ More than half of UTD's alumni live in the Metroplex.
- ❖ Top Texas counties of origin: Dallas, Collin, Harris, Denton, Tarrant, Travis.
- ❖ Top States of origin: Texas, Louisiana, California, Oklahoma, Illinois, New York.
- ❖ Top countries of origin: USA, India, China, Vietnam, Taiwan, Mexico, South Korea, Pakistan.
- ❖ Top undergraduate majors: biology, business administration, computer science, electrical engineering, interdisciplinary studies, clinical psychology.
- ❖ Top graduate majors: accounting and information management, communication disorders, computer science, electrical engineering, humanities, management and administrative science.



## **TECHNOLOGY, RESEARCH AND SERVICE**

### **CENTER FOR BRAINHEALTH**

Dedicated to achieving an individual's highest mental and communicative potential to optimize brain health after injury, disease and natural aging. The center combines cutting-edge brain research with clinical interventions.

<http://www.brainhealth.utdallas.edu>

### **CALLIER CENTER FOR COMMUNICATION DISORDERS**

Programs combine state-of-the-art diagnostic and treatment services for hearing, speech and language disorders. Located at two sites, one adjacent to UT Southwestern Medical Center and one on the main UTD campus, the center combines education, research and clinical practice, and focuses on professional collaborations with the regional medical community.

<http://www.callier.utdallas.edu>

### **CYBERSECURITY & EMERGENCY PREPAREDNESS INSTITUTE**

Created to address rapidly growing homeland security problems in cybercrime, information assurance and emergency preparedness. It is one of only a handful of entities of its kind in the United States, and UTD has also expanded course offerings in these and other related areas.

<http://www.utdallas.edu/research/dfepi>

### **INSTITUTE OF BIOMEDICAL SCIENCES AND TECHNOLOGY**

Integrates the biological, physical, cognitive and engineering sciences to enhance human health and quality of life. The institute integrates the multi-disciplinary expertise of molecular and cell biologists, chemists, physicists, nanotechnologists, mathematicians and statisticians, engineers and computer scientists, neuroscientists, hematologists, social scientists, and management faculty to perform cutting edge interdisciplinary projects.

<http://www.utdallas.edu/research/ibmst>



### **INSTITUTE FOR EXCELLENCE IN CORPORATE GOVERNANCE**

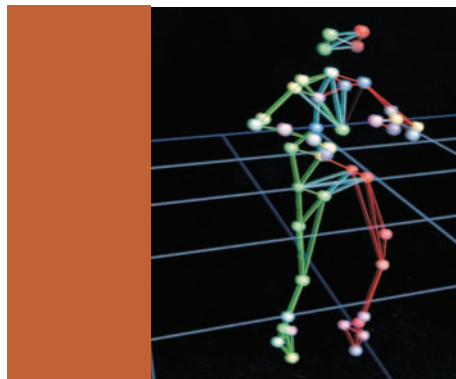
Provides corporate directors and senior officers with practical, timely and in-depth understanding and guidance regarding the opportunities, responsibilities and risks associated with the effective discharge of their fiduciary duties.

<http://som.utdallas.edu/iecg>

### **INSTITUTE FOR INTERACTIVE ARTS AND ENGINEERING**

Provides students with an opportunity to learn about interactive advancements in the fields of communication, entertainment, education and training, as well as in scientific and medical applications. Programs create a dynamic fusion of imagination, intellectual agility and technological expertise.

<http://iaae.utdallas.edu>





## **NANOTECH INSTITUTE**

Develops new science and technology exploiting the nanoscale. The institute seeks to eliminate the boundaries that interfere with the transition from science to technology, and from technology to product on the nanoscale. A major focus is NanoEnergetics, which will help generate innovative technologies for energy harvesting, storage, transmission and conversion.

<http://nanotech.utdallas.edu>

## **SICKLE CELL DISEASE RESEARCH CENTER**

The only center of its kind in the southwestern United States—and the first NIH-funded sickle cell center in Texas—this center aims to find better therapeutics and a cure for sickle cell disease by focusing on the molecular, cellular and whole-organism levels.

<http://www.utdallas.edu/research/sickle-cell>

## **WILLIAM B. HANSON CENTER FOR SPACE STUDIES**

Advances the understanding of the evolution of solar system bodies by being involved in the design, construction and flight of space plasma sensors for spacecraft and rockets, the development of software and analysis tools for data interpretation, and the advancement of numerical models of the solar terrestrial environment.

<http://utd500.utdallas.edu>





## OUR SCHOOLS

*UTD has seven schools, each of which has earned respect in its own right in a wide array of fields. But perhaps what is most remarkable about all of our schools is that instead of operating each as a separate silo that offers a narrow academic experience, our students and faculty are encouraged to delve into innovative and exciting new realms that cross the boundaries between schools. The result is academic programs and degree plans that are innovative, multidisciplinary, flexible and creative.*

## ARTS AND HUMANITIES

Combines art, science and technology to create innovative programs. Fine arts converge with computer science in courses that capitalize on UTD's location in a hotbed of the computer-gaming industry. It is also home to one of the largest and most sophisticated motion capture laboratories in the nation.

## BEHAVIORAL AND BRAIN SCIENCES

Makes groundbreaking discoveries in education and research in the areas of psychology, neuroscience, cognitive science and speech-language pathology and audiology. Researchers study how aging affects memory and brain function for advancing the treatment of autism, Alzheimer's, dyslexia, recovery from stroke and other neurological injuries.

## ERIK JONSSON SCHOOL OF ENGINEERING AND COMPUTER SCIENCE

Cutting-edge research pushes the frontiers of knowledge in electrical engineering, computer science, language processing, wireless communications, computer engineering and related areas. It has responded to the growing needs of the surrounding business community by expanding facilities, creating research centers and customizing degree options.



## GENERAL STUDIES

The hallmark interdisciplinary studies programs allows students to build their own majors from coursework in different schools and accommodates students with varied interests in arts, science and business issues, and those with unique academic goals not served by traditional majors.

## MANAGEMENT

One of the nation's leading public business schools, it boasts the #1 Executive MBA program in the Metroplex and is nationally ranked for its full-time Cohort MBA program. It is the largest and fastest growing of UTD's schools. Enrollment has nearly doubled in less than a decade.

## NATURAL SCIENCES AND MATHEMATICS

Produces molecular biology and geoscience and space science research, plus chemistry, mathematics, and science and mathematics education. The molecular and cell biology major is a national prototype for interdisciplinary research and education.

## SOCIAL SCIENCES

Studies such issues as recession, budget deficits, terrorism, war, risk management, housing, poverty and criminal behavior. Degree programs include crime and justice studies, economics and finance, geography, government and politics, public administration, sociology and political science.

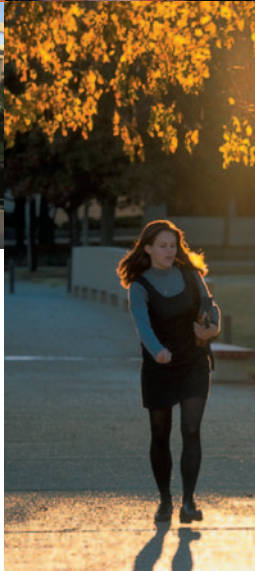
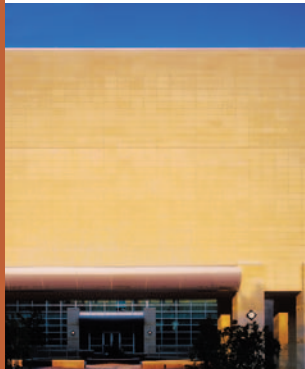


**CONTACT INFORMATION:  
SCHOOLS**

Arts and Humanities	972-883-2984
Behavioral and Brain Science	972-883-2357
Erik Jonsson School of Engineering and Computer Science	972-883-2974
General Studies	972-883-2350
Management	972-883-2516
Natural Science & Mathematics	972-883-2416
Social Sciences	972-883-2935

**ADMINISTRATION**

Dr. David Daniel President	972-883-2201
Dr. Hobson Wildenthal Executive Vice President & Provost	972-883-2271
Dr. Da Hsuan Feng Vice President for Research & Economic Development	972-883-4566
Ms. Marjie French Vice President Development	972-883-2407
Mr. Carlos González Peña Vice President Public Affairs	972-883-2107
Dr. Darrelene Rachavong Vice President for Student Affairs	972-883-6863
Dr. Larry D. Terry Vice President Business Affairs	972-883-2273
Mr. William Hargrove Executive Director of Information Resources	972-883-6883
Dr. Lawrence Redlinger Executive Director of Strategic Planning & Analysis	972-883-6188
Mr. Steve McGregor Director of News & Information	972-883-2155





The University of Texas at Dallas  
800 West Campbell Road  
Richardson, TX 75080  
972.883.2111  
[utdallas@utdallas.edu](mailto:utdallas@utdallas.edu)  
[www.utdallas.edu](http://www.utdallas.edu)