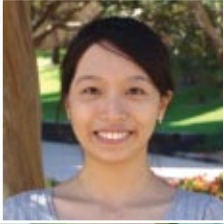
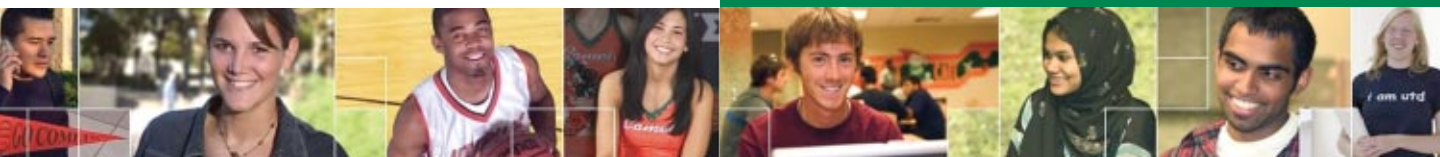


THE UNIVERSITY OF TEXAS AT DALLAS

INTERNATIONAL STUDENT INFORMATION



CREATING THE FUTURE



## WHY UTD?

Welcome to The University of Texas at Dallas, a dynamic research institution on the cutting edge of science, technology, medicine, business, policy sciences, and the arts.

UTD fosters a strong tradition of academic excellence. It became part of the U.T. System in 1969, offered only graduate degrees until 1975, and admitted its first freshman class in 1990. Today, UTD offers 42 undergraduate degrees and 76 graduate degrees. It is host to seven schools, offers an array of interdisciplinary degree programs, and features a student population as diverse as its areas of study.

With a current enrollment of more than 14,000 students and a world-class faculty that includes two Nobel laureates, UTD aims to provide Texas and the nation with the benefits of educational and research programs of the highest quality. By merging theory with practice in classrooms and at the university's 29 research centers, curious minds are challenged to find the answers to their questions.

Unique apartment-style housing on campus is available to all students, including freshmen. In short, UTD provides a quality education and a wealth of opportunities to anyone striving to reach their potential.



## Student Involvement

UTD has a Center for Student Involvement (CSI) that is dedicated to helping UTD students become more connected to campus life. They provide programming and services for student organizations and for students interested in participating in the many activities at UTD. Visit their website at [www.utdallas.edu/student/union/csi](http://www.utdallas.edu/student/union/csi)

*"Location, diversity and strong support from the university make UTD attractive to students all over the world. It is also one of the contributions to the continuous growth of the university."*

Jun Ru  
Chinese Student Association



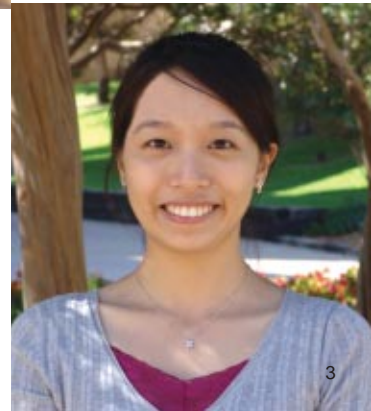
*"I never felt like I was away from home. There is so much diversity around UTD campus...looks like whole globe unites here...I am enjoying my student life."*

Manoj Pawar  
Indian Student Association



*"Come and discover this diverse university with excellent faculty, multicultural campus life, and tons of friendly students together here!"*

Euhanna Fu  
Taiwanese Student Association

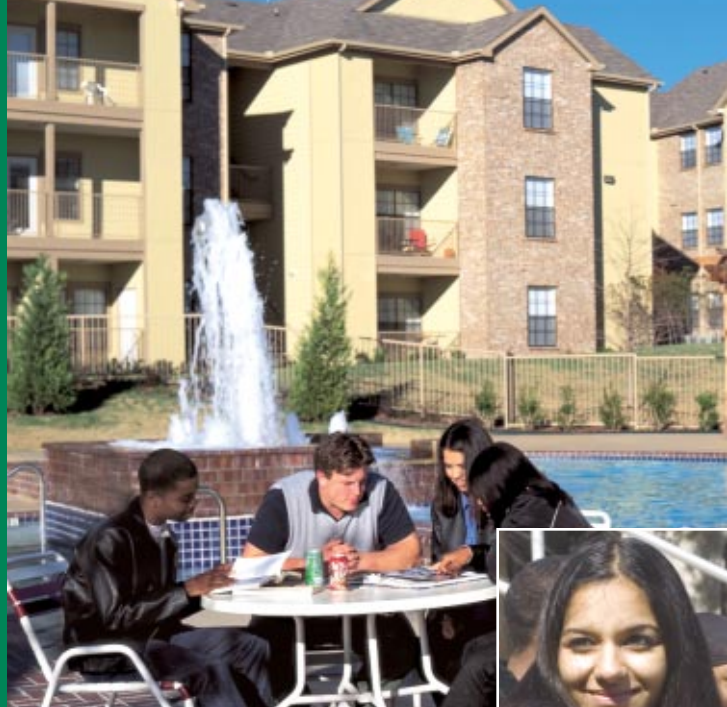






**Pablo Trinidad**  
 Poza Rica, Veracruz,  
 Mexico  
 Arts and Technology  
 Graduate Student

"UTD is a natural home for international students interested in participating in interdisciplinary, applied sciences, policy sciences, and/or art & technology programs. Students enjoy the advantages of a quality campus community in one of the fastest growing metropolitan and cosmopolitan areas of the United States."



## Quality Education

The cost of college varies from student to student even at the same university, but based on current experience, these are the approximated costs a student might expect for one full year.

ESTIMATED COST OF ATTENDANCE 2007-2008		
(Per Year)	Undergraduate	Graduate
<b>Tuition &amp; Fees*</b>	<b>\$13,300</b> (12 hours per semester)	<b>\$10,950</b> (9 hours per semester)
<b>Living Expenses**</b>	<b>\$ 8,061</b>	<b>\$ 8,061</b>
<b>Books, Supplies &amp; Required Medical Ins (F &amp; J Students ONLY)</b>	<b>\$ 2,239</b>	<b>\$ 2,239</b>
<b>Total***</b>	<b>\$23,600</b>	<b>\$21,250</b>

\*Tuition, fees, and books based on two semesters of enrollment plus \$100 International Special Services fee.

\*\*Includes housing (based on shared apartment cost), food, transportation, and miscellaneous expenses.

\*\*\*Use only as a guideline for estimating charges. Estimates are subject to change; please refer to Financial Aid's website at

<http://financial-aid.utdallas.edu>

## Housing

Waterview Park Apartments are located on campus within easy walking distance to all campus facilities. The apartments at Waterview Park are unfurnished and do not include a meal plan. For more information about the Waterview Park Apartments, contact:

Waterview Park Apartments  
 2800 Waterview Pkwy  
 Richardson, TX 75080

972-454-5000\*  
 866-276-9982 Toll Free  
 972-238-3612 Fax

\* International callers should dial this number with the correct country code.

Though UTD students have priority for available units at Waterview Park, you are not assured an apartment. There are other apartments in the area surrounding the UTD campus. Please be advised that many students living in these apartments find it necessary to own a car or to use public transportation.

Email: [info@waterviewparkapts.com](mailto:info@waterviewparkapts.com)

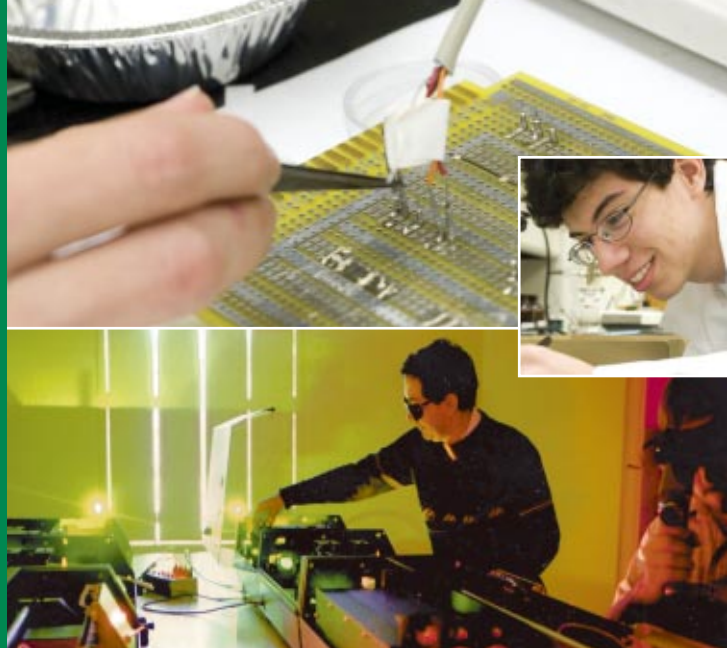
[www.utdallas.edu/student/slife/housing/general/index.html](http://www.utdallas.edu/student/slife/housing/general/index.html)

[www.waterviewparkapts.com](http://www.waterviewparkapts.com)



**Sheeja Thomas**  
Plano, TX  
National Merit Scholar

"I was worried about foregoing the opportunity to have a new experience outside of the state, but after seeing the small class sizes and opportunities for close interaction with professors and the National Merit Scholarship offer, I chose UTD!"



## Academic Excellence Scholarships (AES)

All admitted freshmen are considered for an AES.

### Academic Recognition Scholarship

- \$1,000 per semester
- Renewable for four years/eight semesters

### Academic Distinction Scholarship

- Covers all costs of tuition and mandatory fees
- \$1,000 per year contribution toward Waterview Park Apartment rental expenses
- Renewable for four years/eight semesters

### Academic Honors Scholarship

- Covers all costs of tuition and mandatory fees
- \$1,000 per year contribution toward Waterview Park Apartment rental expenses
- \$1,500 cash award per semester towards books, supplies, and other educational expenses
- Renewable for four years/eight semesters

### AES for National Merit Scholars

- Must be admitted to UTD, must list UTD as first choice
- Covers all costs of tuition and mandatory fees
- \$1,000 per year contribution toward Waterview Park Apartment rental expenses
- \$2,500 cash award per semester towards books, supplies, and other educational expenses
- Renewable for four years/eight semesters

**Phone: 972-883-6708**  
**E-mail: aes@utdallas.edu**

## Academic Excellence Transfer Scholarship

Your application for admission serves as your scholarship application. An additional scholarship application is not required.

**To be eligible, the following criteria apply:**

- Accepted for admission as a first time, degree-seeking full-time undergraduate transfer student and meet the minimum GPA/semester credit hour requirements
- AES Transfer Scholarships are applicable toward UTD tuition and fees and are automatically offered to all UTD transfer students who have been admitted, meet the eligibility requirements, and complete 12 UTD undergraduate credit hours each semester
- After the first year, recipients who have completed at least 24 credit hours and have a cumulative UTD GPA of at least 3.75 are eligible to compete for a Continuing Student Academic Excellence Scholarship

AWARDS			
GPA Requirements	Transferable SCH	Fall & Spring	Spring
3.90 and above GPA	42-90	\$2,000	\$1,000
3.75 - 3.89 GPA	42-90	\$1,500	\$750
3.50 - 3.74 GPA	42-90	\$1,000	\$500

Recipients must continue to meet all eligibility requirements for the duration of the award. Awards are contingent on availability of funding and are for one academic year.



## International Students & Financial Aid

As an international student, the Financial Aid Office will be able to assist you under two different types of programs.

Short-term loans for one term of enrollment are available for students experiencing cash flow problems. Students may borrow tuition and fees for one term. The due date will not exceed 60 days for loans obtained in a long term or 30 days for loans obtained during the shorter summer term(s). Students needing emergency loans for rent, utilities, etc. are also available.

Long-term student loans are available through various private lenders allowing students to borrow funds to pay tuition and fees, books and supplies, and living expenses. These loans are based on the credit worthiness of the borrower and require a cosigner who is a U.S. citizen.

Financial aid programs through the financial aid office are available for U.S. citizens, permanent residents of the U.S. or other eligible non-residents.

Scholarships through sources outside the university are made available through the Financial Aid Office and some are available to international students. UTD offers a variety of scholarships in the fall and spring terms for students already attending UTD. Availability of these scholarships varies yearly and individual awards are based on funding for the year. UTD offers scholarships to admitted undergraduate students through the Academic Excellence Scholarship Program. There is a range of scholarship support awarded through the Undergraduate Dean's Office.

Please e-mail [ugdean@utdallas.edu](mailto:ugdean@utdallas.edu) for further information on the Academic Excellence Scholarship Program.

Graduate teaching and research assistantships are issued through the department of your discipline of study. Please contact the schools directly for information on availability and criteria.

### Financial Aid Office

Phone: 972-883-2941 Fax: 972-883-2947

<http://financial-aid.utdallas.edu>

## Federal Financial Aid

The mission of our Financial Aid Office is to help remove financial barriers and assist students with the cost of attendance at The University of Texas at Dallas. We strive to provide you with the federal, state, and institutional financial assistance that you are eligible to receive to pursue your educational objectives at UTD. The application period for federal financial aid begins January 1 of each year for the following academic year (fall, spring, and summer). The Free Application for Federal Student Aid (FAFSA) is available online at [www.fafsa.ed.gov](http://www.fafsa.ed.gov). You may obtain the FAFSA packet from your high school guidance counselor or by contacting the Financial Aid Office at UTD. Only U.S. citizens and permanent residents are eligible to receive federal financial aid.

The FAFSA code for UTD is 009741.

Sign up for a PIN (Personal Identification Number) at [www.pin.ed.gov](http://www.pin.ed.gov)





# Academic Programs

## ARTS AND HUMANITIES

972-883-2980 • [ah.utdallas.edu](http://ah.utdallas.edu)

Arts and Humanities, BA  
Arts and Performance, BA  
Historical Studies, BA  
Literary Studies, BA  
Arts and Technology, BA, MA, MFA  
History, MA  
Humanities, MA, Ph.D.  
Aesthetic Studies, MA, MAT, Ph.D.  
History of Ideas, MA, MAT, Ph.D.  
Studies in Literature, MA, MAT, Ph.D.

## BEHAVIORAL AND BRAIN SCIENCES

972-883-2360 • [bbs.utdallas.edu](http://bbs.utdallas.edu)

Applied Cognition and Neuroscience, MS  
Audiology, AUD  
Child Learning and Development, BS  
Cognition and Neuroscience, Ph.D.  
Cognitive Science, BS  
Communication Disorders, MS  
Communication Sciences and Disorders, Ph.D.  
Human Development & Early Childhood Disorders, MS  
Neuroscience, BS  
Psychological Sciences, MS, Ph.D.  
Psychology, BA  
Speech-Language Pathology and Audiology, BS

## ECONOMIC, POLITICAL AND POLICY SCIENCES

972-883-2920 • [www.utdallas.edu/epps](http://www.utdallas.edu/epps)

Applied Sociology, MS  
Criminology, BA, MS, Ph.D.  
Economics, BA, BS, MS, Ph.D.  
Geography, BA  
Geospatial Information Sciences, MS, Ph.D.  
Political Science, BA, Ph.D.  
Public Affairs, BS, MPA, Ph.D.  
Public Policy and Political Economy, Ph.D.  
Sociology, BA

## ENGINEERING AND COMPUTER SCIENCE

972-883-2976 • [ecs.utdallas.edu](http://ecs.utdallas.edu)

Computer Engineering, BS, MS, Ph.D.  
Computer Science, BS, MS, Ph.D.  
Computer Science - Software Engineering, MSCS  
Electrical Engineering, BSEE, MSEE, Ph.D.  
• Microelectronics, MSEE, Ph.D.  
• Telecommunications, MSEE  
Materials Science and Engineering, MS, Ph.D.  
Software Engineering, BS, Ph.D.  
Telecommunications Engineering, BSTE, MSTE, Ph.D.

## GENERAL STUDIES

972-883-2323 • [www.utdallas.edu/dept/gs/](http://www.utdallas.edu/dept/gs/)

American Studies, BA  
Gender Studies, BA  
Interdisciplinary Studies, BA, BS, MA  
Teacher Certification

## MANAGEMENT

972-883-2275 • [som.utdallas.edu](http://som.utdallas.edu)

Accounting and Information Management, BS, MS  
Business Administration, BS  
Finance, BS  
Healthcare Management, MS  
Information Technology Management, MS  
International Management Studies, MA, Ph.D.  
Management and Administrative Sciences, MS  
Management Sciences, Ph.D.  
Master of Business Administration, MBA  
Cohort, Executive, Global Leadership Executive,  
Global Online, Medical Management,  
Project Management

## NATURAL SCIENCES AND MATHEMATICS

972-883-2853 • [www.utdallas.edu/nsm](http://www.utdallas.edu/nsm)

Applied Physics, MS  
Biochemistry, BS  
Bioinformatics and Computational Biology, MS  
Biology, BA, BS  
Biology - Molecular and Cell Biology, MS, Ph.D.  
Biotechnology, MS  
Chemistry, BA, BS, MS, Ph.D.  
Geosciences, BA, BS, MS, Ph.D.  
Mathematical Sciences, BS, MS  
• Applied Mathematics, BS, MS, Ph.D.  
• Engineering Mathematics, MS  
• Statistics, BS, MS, Ph.D.  
Mathematics Education, MAT  
Molecular Biology, BS  
Physics, BA, BS, MS, Ph.D.  
Science Education, MAT

# Academic Admissions Requirements

Thank you for your interest in The University of Texas at Dallas (UTD). The following information is designed to answer some of your questions about the application process and to inform you about the specific materials that the university requires in order to consider you for admission. When applying to the university, please include all the necessary materials with your application.

## Undergraduate Academic Requirements

Applicants to an undergraduate program must have earned the equivalent of a 12 year high school diploma or secondary certificate. The following documents must be submitted to be considered for undergraduate admission:

- 1) Official, attested photocopies, or certified copies of all high school transcripts, mark sheets, or examination certificates showing the completion of U.S. 12th grade graduation equivalent must be submitted. In addition, an official copy of final examinations taken at the end of the secondary school program such as G.C.E. "O" and "A" Level Examinations, school leaving certificates, and matriculation exams, should be submitted.
- 2) College or university work: If college or university work has been completed from an institution recognized by that country's Ministry of Education, the following documents must accompany the application:
  - Official, attested, or certified copies of all transcripts or mark sheets showing subjects completed, grades earned, and dates of courses taken — **CONSOLIDATED MARK SHEETS ARE NOT ACCEPTABLE**
  - Copies of course syllabi or course descriptions. These must be submitted before anything other than general transfer credit can be assigned. This is extremely important.
  - If any degrees have been earned, an official, attested, or certified copy of the diploma or degree certificate showing the type and date of the degree conferred.

An overall Grade Point Average on any college credit completed should be 2.5 (based on 4.0 = A). College courses with grades below C (2.0) are not transferable.

### 3) Official Test Scores

- SAT or ACT test scores (for additional information see [www.utdallas.edu/dept/ugraddean/admissions.html](http://www.utdallas.edu/dept/ugraddean/admissions.html))
- SAT scores for entering freshmen average between 1140 and 1340. Exemption: SAT/ACT scores are not required for students with 30 or more transferable college credit hours.
- TOEFL with a minimum score of 550 on the written exam, 213 on the computer exam, or 80 on the internet-based exam

## Graduate Academic Requirements

Applicants to a graduate program must have earned at least the equivalent of a U.S. 4-year bachelor's degree beyond the 12th grade of secondary or high school (most 3-year bachelor's degrees are not acceptable) from an institution recognized by that country's Ministry of Education. An overall Grade Point Average of 3.0 (based on 4.0 = A) or better is expected. The following documents must be submitted in order to be considered for graduate admission:

- 1) Official, attested photocopies, or certified copies of the degree certificate or diploma showing the type of degree and date earned
- 2) Official, attested photocopies, or certified copies of all previous university transcripts or mark sheets showing subjects completed, grades earned, and dates of courses taken — **CONSOLIDATED MARK SHEETS ARE NOT ACCEPTABLE**
- 3) Official Test Scores
  - GRE for all programs except Management and Accounting
  - GMAT for Management and Accounting only
  - TOEFL with a minimum score of 550 on the written exam, 213 on the computer exam, or 80 on the internet-based exam

Acceptance into a graduate program may be contingent upon specific admission criteria of the degree granting program. Details on admission criteria for specific graduate programs may be obtained by emailing that graduate program at UTD.

## Credential and Translation Information

All transcripts or mark sheets as well as diplomas or degree certificates should be sent directly to UTD from the issuing institution. UTD evaluates all foreign credentials using its own established policies and standards. Those with credentials deemed not acceptable will be denied admission or transfer credit.

All documents must be submitted in their original language along with certified English translations. Translation services must be performed by the academic institution or government agency.

For information regarding where and how to take the following tests, please see the following web sites:

<b>TOEFL, SAT, or GRE</b>	<b><a href="http://www.ets.org">www.ets.org</a></b>
<b>ACT</b>	<b><a href="http://www.act.org">www.act.org</a></b>
<b>GMAT</b>	<b><a href="http://www.gmac.org">www.gmac.org</a></b>

Please note: The information contained in this document is subject to change as new regulations are developed. Adherence to this document does not guarantee that additional requirements may not exist at your time of application.



## Applying for Admission

The following is a checklist of materials required by the UTD Office of Enrollment Services to be considered for admission. Only complete applications received by the deadline (see deadline dates on next page) will be guaranteed an admissions decision. **INCOMPLETE APPLICATIONS WILL NOT BE PROCESSED.** If your application is not complete by the deadline, there is no guarantee that it will be reviewed.

### UNDERGRADUATE Checklist:

- \_\_\_\_\_ Complete UTD undergraduate application at [www.applytexas.org](http://www.applytexas.org)
- \_\_\_\_\_ \$50 application fee\*
- \_\_\_\_\_ \$50 foreign credential fee, if applicable\*
- \_\_\_\_\_ TOEFL score \*\*
- \_\_\_\_\_ SAT/ACT score \*\*
- \_\_\_\_\_ Diplomas/degree certificates\*\*\*
- \_\_\_\_\_ High school transcripts/marksheets\*\*\*
- \_\_\_\_\_ All college/university transcripts/marksheets\*\*\*
- \_\_\_\_\_ Certified translation of non-English documents\*\*\*
- \_\_\_\_\_ Essay (Topic C)
- \_\_\_\_\_ 2 letters of recommendation

### GRADUATE Checklist:

- \_\_\_\_\_ Complete UTD graduate application at [www.applytexas.org](http://www.applytexas.org)
- \_\_\_\_\_ \$50 application fee\*
- \_\_\_\_\_ \$50 foreign credential fee, if applicable\*
- \_\_\_\_\_ TOEFL score \*\*
- \_\_\_\_\_ GRE or GMAT score \*\*
- \_\_\_\_\_ Diplomas/degree certificates \*\*\*
- \_\_\_\_\_ All college/university transcripts/marksheets\*\*\*
- \_\_\_\_\_ 3 letters of recommendation
- \_\_\_\_\_ Narrative outlining academic goals at UTD
- \_\_\_\_\_ Certified translation of non-English documents\*\*\*

\* All fees are non-refundable. Payment must be in U.S. dollars. You can pay by Visa/MasterCard, money order, or a check drawn on a U.S. bank. (A check from a non-U.S. bank can be used, but it **MUST** have the routing number permanently printed on the bottom of the check.)

\*\* If applicable. See 'Academic Admission Requirements' earlier in this document to verify which scores are applicable.

\*\*\* All official/attested documents must be submitted in a sealed envelope with the institutional stamp on the outside of the envelope. See 'Academic Admission Requirements' earlier in this document for detailed information on credential requirements.

### APPLICATION & DOCUMENT DEADLINES:


	Fall	Spring	Summer
F, J, B visa holders	May 1	Sept. 1	March 1
All other visa holders	July 1	Nov. 1	April 1



**Please mail your application and supporting materials to:**

**The University of Texas at Dallas  
Office of Enrollment Services – HH10  
PO Box 830688  
Richardson, TX 75083-0688**





Office of Enrollment Services, HH10  
The University of Texas at Dallas  
PO Box 830688  
Richardson, Texas 75083-0688

Phone: 972-883-2270  
1-800-889-2443  
Fax: 972-883-6803

email: [interest@utdallas.edu](mailto:interest@utdallas.edu)

[www.utdallas.edu](http://www.utdallas.edu)



The University of Texas at Dallas is an equal  
opportunity/affirmative action university. 12/06