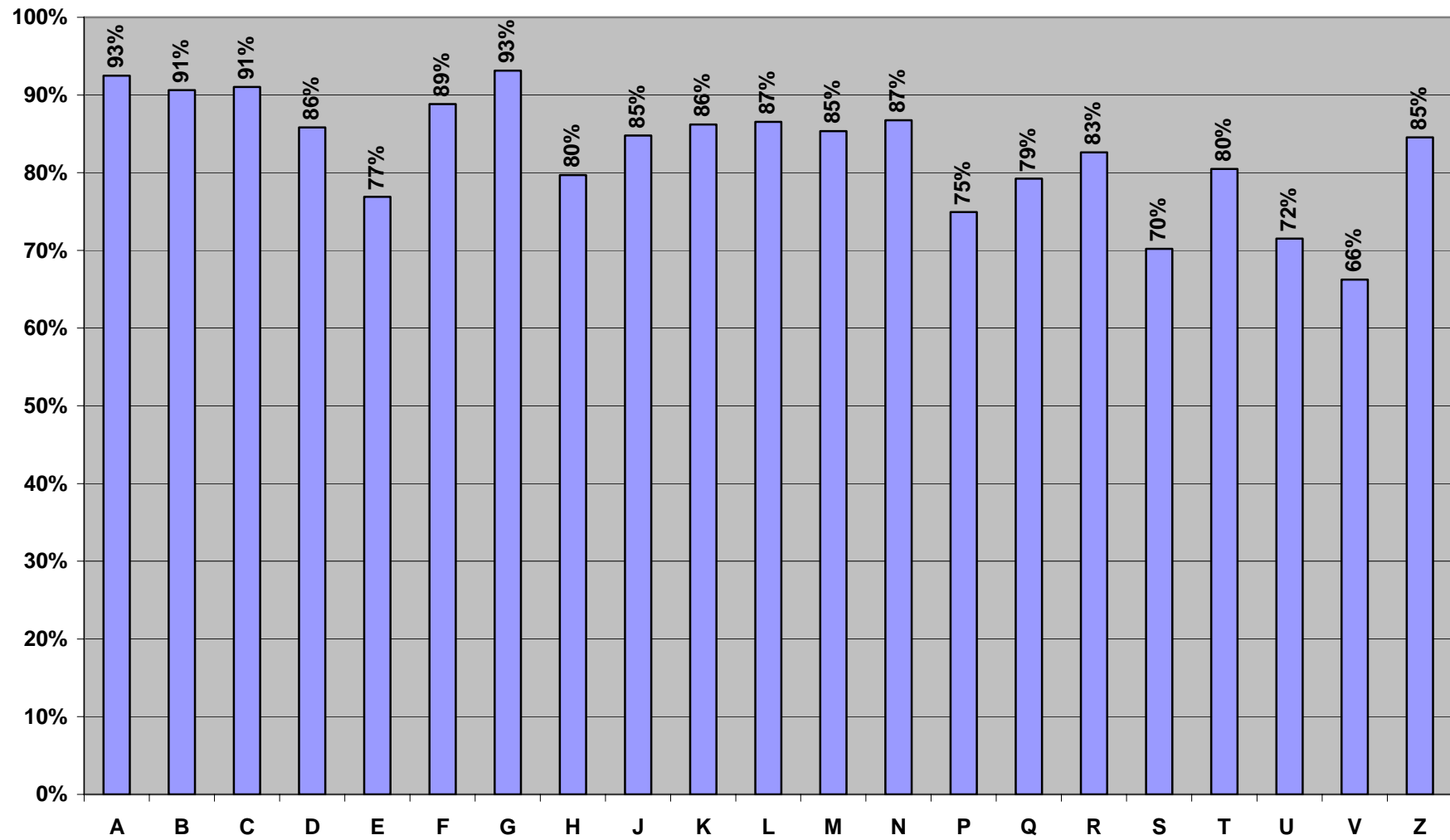
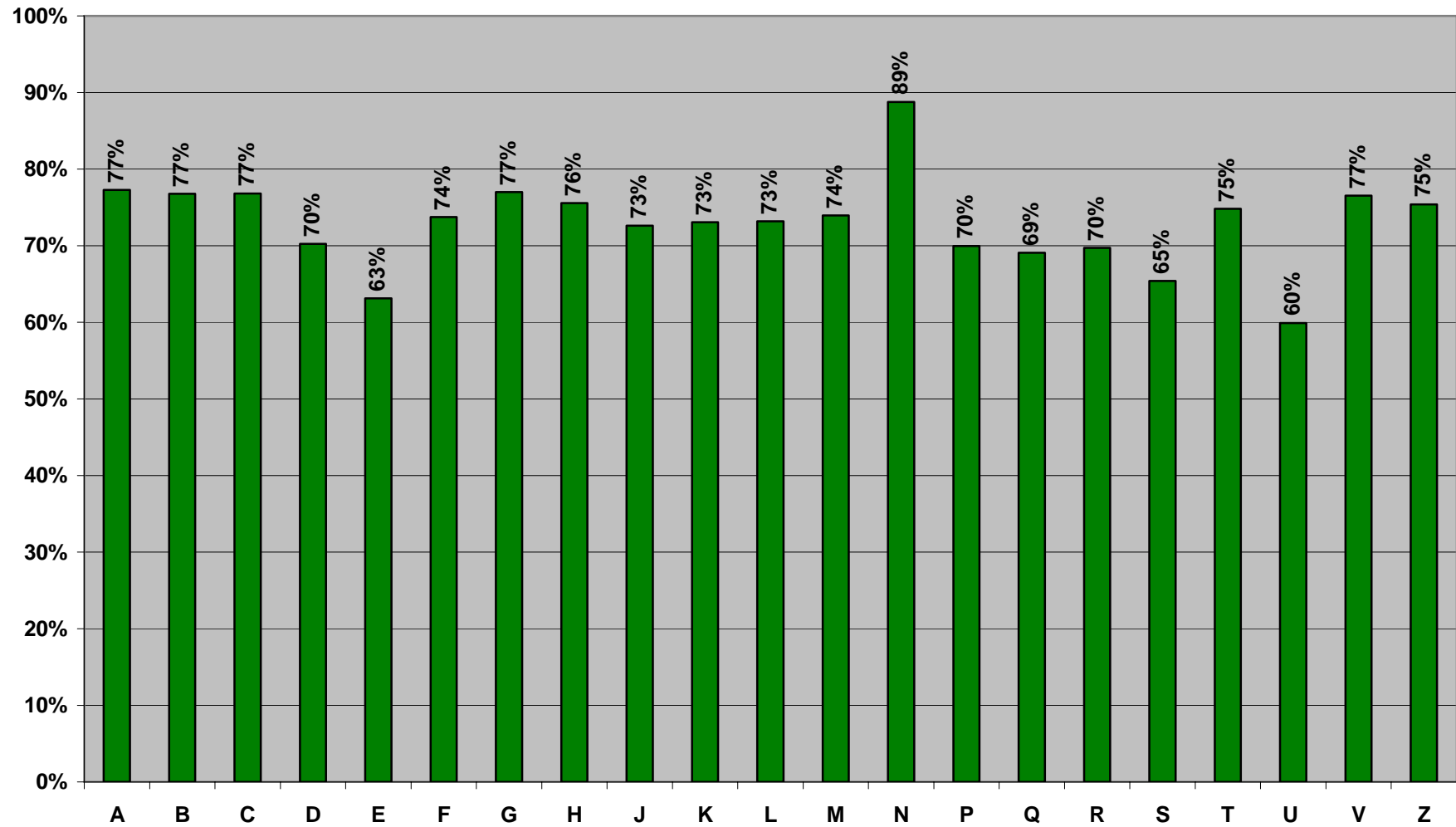


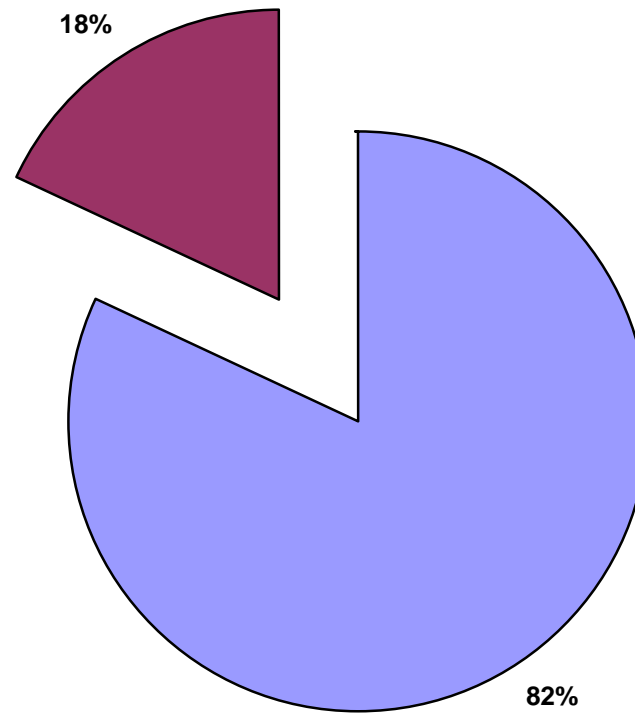
Main Stacks, 2006
(Using only middle shelves)



Main Stacks, 2006
(Using middle and bottom shelves)



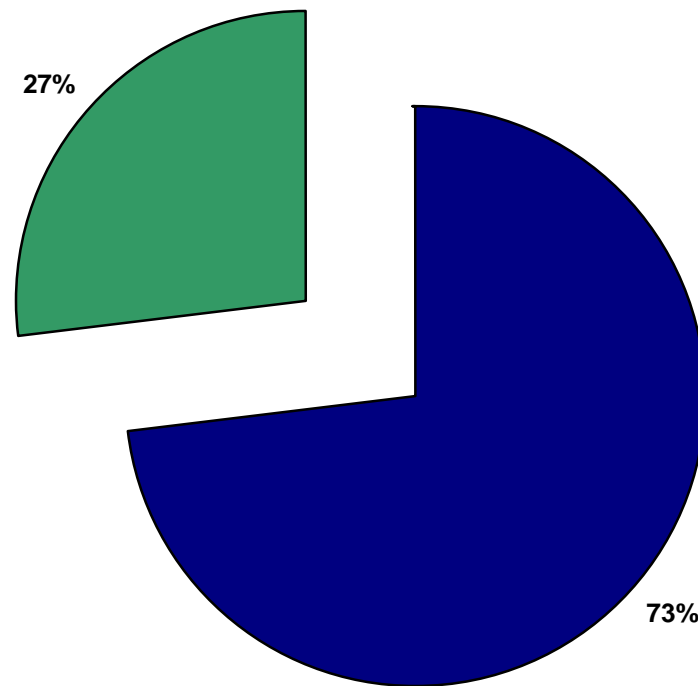
Space Analysis, 2006
(Using only middle shelves)



■ Filled ■ Unfilled

Main Stacks are 82% full. At 25,000 volumes added per year, growth room is 1.934 years.

Space Analysis, 2006
(Using Middle and Bottom Shelves)



■ Filled ■ Unfilled

Main Stacks are 73% full. At 25,000 volumes added per year, available growth room is 3.55 years.