

STUDENT UNION FEE BUDGETS \$60 PER SEMESTER	Original Budget FY2006-2007	Requested Budget FY2007-2008	Adjusted Budget FY2006-2007	Steady State Budget FY2007-2008	<i>Adjusted</i>
Projected Fee Revenue	\$2,035,375	\$2,035,375	\$2,035,375	\$2,035,375	
Other Projected Revenue					
Total Projected Revenue	\$2,035,375	\$2,035,375	\$2,035,375	\$2,035,375	
Beginning Fund Balance September 1st	\$588,842	\$216,888	\$588,842	\$413,163	
Total Projected Funds Available	\$2,624,217	\$2,252,263	\$2,624,217	\$2,448,538	
PROJECTED EXPENDITURES					
Activities Program (SUAAB)	\$229,252	\$229,613	\$192,842	\$193,203	
Student Activities (Late Night)	\$81,514	\$84,172	\$80,399	\$83,057	
Student Union	\$1,428,611	\$1,774,688	\$1,269,861	\$1,324,809	<i>1,326,610</i>
Fringe Benefits Costs	\$177,452	\$205,555	\$177,452	\$205,555	
Debt Services Costs	\$490,500	\$486,813	\$490,500	\$486,813	
Total Expenditures	\$2,407,329	\$2,780,841	\$2,211,054	\$2,293,437	<i>2,295,238</i>
PROJECTED YEAR-END FUND BALANCE	\$216,888	(\$528,578)	\$413,163	\$155,101	<i>153,380</i>
NOTES & ASSUMPTIONS					
1 FY07 original revenue projection based on 2% enrollment growth, revenue projection has been adjusted down to reflect actual current enrollment					
2 Assuming no increase in enrollment for FY08					
3 Desired year-end fund balance = \$200,000 minimum					
4 FY08 steady state reflects increases in merit, longevity, & benefits, and increase in utility costs only					
Explanation of Reductions & Other Calculations	10% FY07 Operating Expense Reduction	Other FY07 Operating Expense Reduction	Added 4% Merit Pool for FY08	Added Longevity Increase for FY08	Added Mission Critical Items for FY08
Fringe Benefits					\$28,103
Activities Program (SUAAB)*	(\$19,396)	(\$17,014)			
Student Activities (Late Night)	(\$1,115)	\$0	\$2,458	\$200	\$0
Student Union**	(\$74,758)	(\$83,992)	\$17,279	\$1,140	\$36,529
	(\$95,269)	(\$101,006)	\$19,737	\$1,340	\$64,632
*SUAAB - Other Reductions = Travel (\$1,500), Taking \$1000-\$2000 each away from Various Individual Programs & Entertainment Options (\$15,514)					
**Student Union - Other Reductions = Comet Lounge Furniture (\$20,000), Media Upgrades (\$15,000) Union Updates & Renovations (\$48,992)					

FY2008 BUDGET REQUEST				
DEPARTMENT NAME:	Student Union			
ACCOUNT NAME:	Activities Program (SUAAB)			
ACCOUNT NUMBER:	4-18219			
Budget Category	FY2007 Actual Budget Allocation	FY2008 4% Merit Reserve	FY2008 Other Requested Changes	FY2008 Total Budget Requested
Projected Revenue (if applicable)				\$0
A&P Salaries	\$9,032	\$361		\$9,393
Classified Salaries		\$0		\$0
TOTAL REGULAR SALARIES	\$9,032	\$361	\$0	\$9,393
Lump Sum Wages	\$26,260			\$26,260
TOTAL SALARIES & WAGES	\$35,292		\$0	\$35,653
Longevity Pay				\$0
Travel	\$5,000			\$5,000
M&O	\$188,960			\$188,960
Capital				\$0
TOTAL OPERATING EXPENSE	\$193,960		\$0	\$193,960
TOTALS	\$229,252		\$0	\$229,613
REVENUE MINUS EXPENSE TOTAL EXPENSE BUDGET	(\$229,252)			(\$229,613)
ITEMIZED PRIORITY & JUSTIFICATION FOR REQUESTED CHANGES				

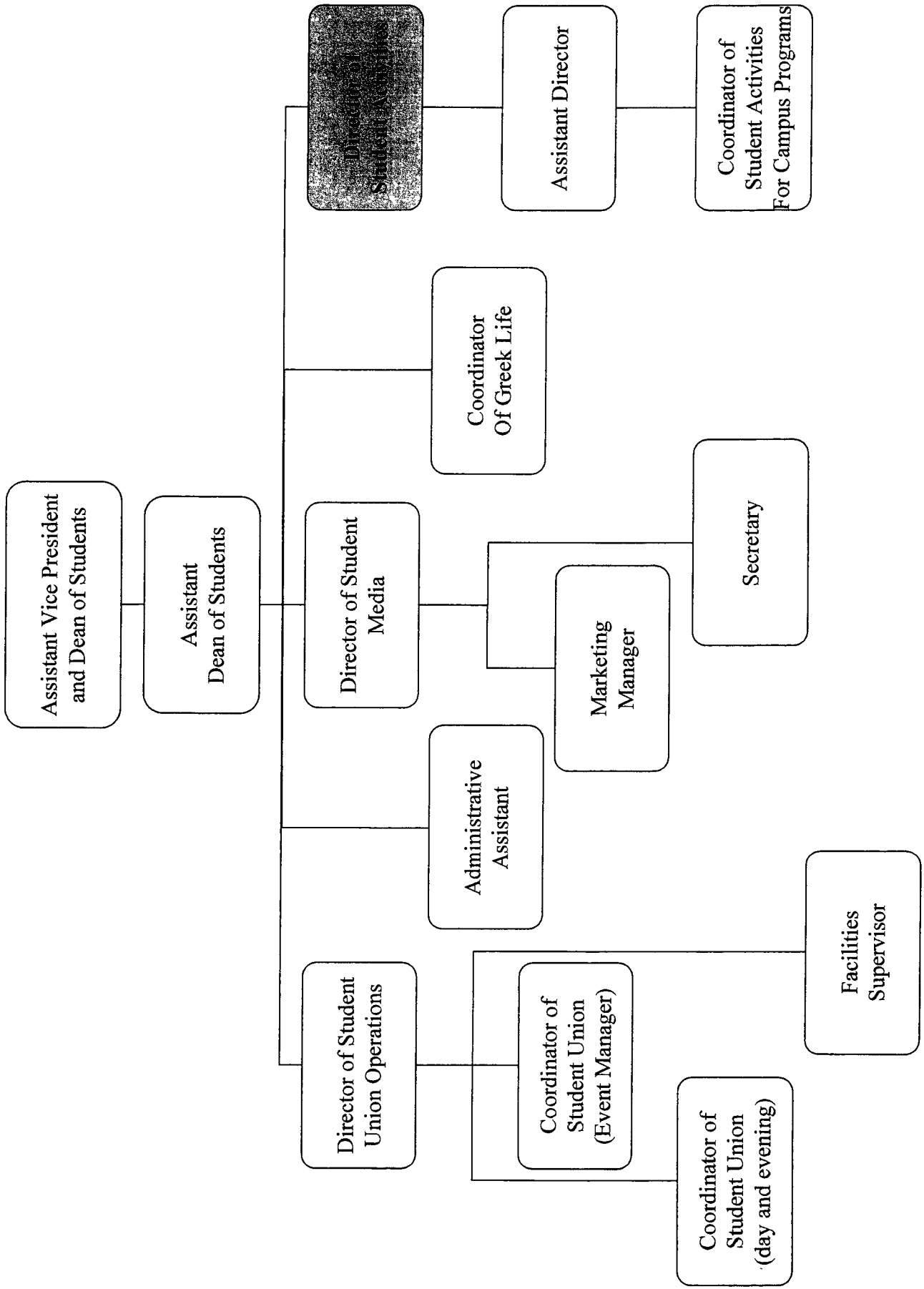
FY2007 BUDGET DETAIL		
Department:	Student Union	
Budget Account #:	4-18219	
Budget Account Name:	Activities Program (SUAAB)	
BUDGET CATEGORY	AMOUNT	TOTALS
A& P Positions	\$9,032	
Executive Chair		
Classified Positions	\$0	
TOTAL FY2007 REGULAR SALARIES		\$9,032
Lump Sum Wages	\$26,260	\$26,260
Approximate # of wage positions=3		
TOTAL SALARIES & WAGES		\$35,292
TOTAL FY2007 LONGEVITY PAY	\$0	\$0
Travel	\$5,000	\$5,000
M & O		
Executive Committee	\$11,000	
Cultural Performances	\$10,000	
Holidays	\$6,500	
Pub Entertainment	\$5,000	
Publicity	\$10,000	
Tournaments and Games	\$6,500	
Traditions	\$8,000	
Variety Showcase	\$10,000	
Faculty Programs (mixers, dead lecture)	\$5,000	
Entertainment (flexible options)	\$82,000	
Family Day	\$10,000	
Stressbusters	\$5,000	
Summertime Socials	\$500	
SU Open House	\$250	
Welcome Week	\$7,410	
Equipment	\$2,000	
Office Machines	\$750	
Office Administration	\$2,250	
Postage	\$5,000	
Printing	\$500	
Telephone	\$1,300	
Total M&O		\$188,960
Capital		
	\$0	
Total Capital		\$0
TOTAL OPERATING EXPENSE		\$193,960
TOTAL FY2007 EXPENDITURE BUDGET		\$229,252

FY2008 BUDGET REQUEST				
DEPARTMENT NAME:	Student Union			
ACCOUNT NAME:	Student Activities (Late Night)			
ACCOUNT NUMBER:	4-18220			
Budget Category	FY2007 Actual Budget Allocation	FY2008 4% Merit Reserve	FY2008 Other Requested Changes	FY2008 Total Budget Requested
Projected Revenue (if applicable)				\$0
A&P Salaries	\$61,444	\$2,458		\$63,902
Classified Salaries		\$0		\$0
TOTAL REGULAR SALARIES	\$61,444	\$2,458	\$0	\$63,902
Lump Sum Wages	\$6,000			\$6,000
TOTAL SALARIES & WAGES	\$67,444		\$0	\$69,902
Longevity Pay	\$2,920		\$200	\$3,120
Travel	\$2,000			\$2,000
M&O	\$9,150			\$9,150
Capital				\$0
TOTAL OPERATING EXPENSE	\$11,150		\$0	\$11,150
TOTALS	\$81,514		\$200	\$84,172
REVENUE MINUS EXPENSE TOTAL EXPENSE BUDGET	(\$81,514)			(\$84,172)
ITEMIZED PRIORITY & JUSTIFICATION FOR REQUESTED CHANGES				

FY2007 BUDGET DETAIL		
Department:	Student Union	
Budget Account #:	4-18220	
Budget Account Name:	Student Activities (Late Night)	
BUDGET CATEGORY	AMOUNT	TOTALS
A& P Positions	\$61,444	
Director of Student Activities		
Classified Positions	\$0	
TOTAL FY2007 REGULAR SALARIES		\$61,444
Lump Sum Wages	\$6,000	\$6,000
Approximate # of wage positions=2		
TOTAL SALARIES & WAGES		\$67,444
TOTAL FY2007 LONGEVITY PAY	\$2,920	\$2,920
Travel	\$1,250	\$1,250
Maintenance & Operation		
Programming	\$5,000	
Advertising	\$2,900	
Supplies	\$2,000	
Total M&O		\$9,900
Capital	\$0	
Total Capital		\$0
TOTAL OPERATING EXPENSE		\$11,150
TOTAL FY2007 EXPENDITURE BUDGET		\$81,514

FY2008 BUDGET REQUEST				
DEPARTMENT NAME:	Student Union			
ACCOUNT NAME:	Student Union			
ACCOUNT NUMBER:	4-18201			
Budget Category	FY2007 Actual Budget Allocation	FY2008 4% Merit Reserve	FY2008 Other Requested Changes	FY2008 Total Budget Requested
Projected Revenue (if applicable)				0
A&P Salaries	156,739	6,270	50,000	213,009
Classified Salaries	275,248	11,010	5,104	291,362
TOTAL REGULAR SALARIES	431,987	17,279	55,104	504,370
Lump Sum Wages	243,848		30,000	273,848
TOTAL SALARIES & WAGES	675,835		85,104	778,218
Longevity Pay	5,200		1,140	6,340
Travel	11,250			11,250
M&O	736,326		242,554	978,880
Capital				0
TOTAL OPERATING EXPENSE	747,576		242,554	990,130
TOTALS	1,428,611		328,798	1,774,688
REVENUE MINUS EXPENSE TOTAL EXPENSE BUDGET	(1,428,611)			(1,774,688)
ITEMIZED PRIORITY & JUSTIFICATION FOR REQUESTED CHANGES				
1. 15% increase in utilities due to expected increases				\$36,529
2. Add Director of Student Activities (see job description)				\$50,000
3. Telephone increases				\$2,000
4. Replace sewage pumps				\$10,000
5. 5% increase of custodial supplies due to expected increases				\$500
6. 5% increase of custodial services				\$3,525
7. Equity adjustment for Food Service Manager (\$3,320); reclassification of Asst. Dean to Assoc. Dean (\$1,784)				\$5,104
8. Increased student wages to staff increased number of special events				\$30,000
9. Replace furniture in Galaxy rooms and hallways				\$40,000
10. One-time expenses for security cameras, meeting room media, and lounge furniture				(\$100,000)
11. Replacement of outdated electrical system in SU (Need the same amount for the next three budget cycles-needs to be replaced completely by 2011)				\$250,000

FY2007 BUDGET DETAIL		
Department:	Student Union	
Budget Account #:	4-18201	
Budget Account Name:	Student Union - Union Operations	
BUDGET CATEGORY	AMOUNT	TOTALS
A& P Positions	\$156,739	
Assistant Director of the Student Union		
Assistant Dean of Students		
Classified Positions	\$275,248	
Assistant SU Director		
Coordinator of Student Union		
Coordinator of Student Union		
Student Development Specialist III		
Food Service Manager		
Facility Supervisor		
Facility Supervisor		
Administrative Assistant II		
Administrative Assistant I		
Marketing Manager		
Unallocated		
TOTAL FY2007 REGULAR SALARIES		\$431,987
Lump Sum Wages	\$243,848	\$243,848
Approximate # of wage positions=28		
TOTAL SALARIES & WAGES		\$675,835
TOTAL FY2007 LONGEVITY PAY	\$5,200	\$5,200
Travel	\$11,250	\$11,250
Maintenance & Operation		
Custodial Supplies	\$ 20,000	
Custodial Services	\$ 56,146	
Floor Refinishing	\$ 5,500	
Exterminator	\$ 600	
Utilities	\$ 230,000	
Maint. & Repairs - Physical Plant	\$ 35,000	
Maint. & Repairs - Emergency	\$ 30,000	
Maint. & Repairs - Union Staff	\$ 20,000	
Maint. & Repairs - Media	\$ 10,000	
Upgrades - Media	\$ 15,000	
Upgrades - Security	\$ 25,000	
Union Updates & Renovations	\$ 60,000	
Furniture & Equipment	\$ 15,000	
Furniture - Comet Lounge	\$ 60,000	
Advertising	\$ 2,500	
ACUI Tournaments	\$ 3,000	
Holiday Open House	\$ 2,000	
Student Union Programs	\$ 15,000	
Subscriptions	\$ 10,500	
Memberships & Registrations	\$ 5,500	
Royalties	\$ 3,800	
Office Machines	\$ 5,000	
Office Supplies	\$ 20,000	
Student Meetings & Expenditures	\$ 6,500	
Postage	\$ 280	
Printing	\$ 5,000	
Telephones	\$ 15,000	
Decorations	\$ 5,000	
THE PUB	\$ 50,000	
Miscellaneous	\$ 5,000	
Total M&O		\$ 736,326
Capital		
	\$0	
Total Capital		\$0
TOTAL OPERATING EXPENSE		\$747,576
TOTAL FY2007 EXPENDITURE BUDGET		\$1,428,611



Director of Student Activities

The Director of Student Activities will oversee the programming functions of the student life division with a special focus on designing and implementing a leadership development program for student organization officers and other student leaders. The Director will supervise the program board and advising staff and will work closely with Student Union operations staff to implement successful student programs. This position will work closely with all student groups to ensure compliance with University policies, excellent and accessible advising, and learning opportunities for student leaders. Strong communication with the University community, especially students, is expected, to support their experience and retention.

Responsibilities:

- Develop, coordinate, implement, and evaluate an effective leadership development program aimed at student organization officers and members to include clear learning outcomes and an array of experiences for students
- Chair annual special event committees such as Welcome Week, Homecoming, Family Day, and Leadership Awards Dinner
- Supervise professional and student program board staff
- Review performance contracts, artist materials, and other University documents related to student activities programming
- Oversee departmental budgets, annual budget requests, and other fiscal activities
- Implement assessment practices for accreditation and other evaluative purposes
- Master University rules and regulations and articulate rules to student organizations
- Attend evening, late-night, and weekend events as needed

Qualifications:

- Master's degree in student personnel administration, higher education administration, or related field
- 5 years progressive experience in student life programming
- Previous experience supervising professional and support staff
- Knowledge of, and commitment to, student development theory and its relationship to campus programming and leadership development
- Proven track record of successfully programming events and training programs for student organizations
- Strong interpersonal, verbal, and written communication skills

Preferred:

- Experience implementing or teaching a college-level leadership development course for academic credit

Salary \$50,000.00

Annual Report FY 2006

Student Union
Student Organization Forum
SUAAB
Late Night Programs
Greek Life

September 14, 2006

Submitted to Donna Rogers
Assistant VP for Student Affairs & Dean of Students

Prepared by Phyllis Blanck Assistant Dean of Students & Student Union Director
Contributors: Delvora King, Briana Lemos, Kendra Sikes, Mary Walters, Rich Williams

Table of Contents

Introduction.....	4
Chapter One: Facility & Operations	6
Space Utilization and Event Management.....	7
Other Services and Initiatives	8
Room Reservations Growth.....	9
Total Reservations made by Event Manager	9
Room Usage by Category	10
Booth Usage by Category	10
Chapter Two: Programming	12
SUAAB	12
Late Night Programs	19
Assessment of FY 2006 Goals.....	19
Spring 2006 Late Night Programs	21
Summer Late Night Programs	22
Late Night Programs Summary for FY06.....	22
Chapter Three: The Student Organization Forum	24
SOF Funds Matching FY06 Highlights	24
Chapter Four: Greek Life.....	27
Visibility	27
Initiatives.....	28
Greek Housing	28
Greek Week	28
Councils	29
Educational Programming	31
Growth	31
Greek Event Attendance	33
Chapter Five: Addenda	37
Professional Development	37
Phyllis Blanck, Assistant Dean of Students & Student Union Director	37
Mary Walters, Director of Student Activities	37
Kendra Sikes, SUAAB Advisor.....	37
Homer Salazar, Student Union Coordinator	37
Delvora King, Events Coordinator	38
Ray Mitchel, Student Union Coordinator	38
Briana Lemos, Greek Life Advisor.....	38
Student Organizations.....	38
Publicity Samples & Photo Gallery	43

Introduction

The Student Union is a very different place in appearance and feel than it was just one year ago. We have re-designed the first floor lobby to include spirited pictures of TEMOC and other Comet images. Our new lobby features the UTD alma mater in oversized script and beautiful, but contemporary, furniture. Our durable and attractive furniture incorporates school colors and privacy screens compatible with laptop use.

The purchase of a high-powered, color, laser-jet banner machine has enabled many groups to frequently create large banners and post them throughout the building to advertise their programs. Several display cases (SG, SUAAB, and Greek Life) have used the banner printer to publicize their events. The banner printer has been a terrific addition to the Union atmosphere, as well as a means of communicating events and activities to students.

Other additional facility changes have contributed to increased student activity in the building. We describe these changes in *Chapter One: Facilities and Operations*.

The FY 2005 Annual Report added SUAAB and Late Night Programming into the Student Union report, two areas that previously reported in a separate annual report. This year's report, FY 2006, adds two other components: the Student Organization Forum and Greek Life. Although always closely linked, this is the first year that we have centralized SOF and Greek Life in terms of reporting structure. Thus, this year's report consists of five areas: Student Union, SUAAB, Greek Life, SOF, and Late Night Programs. As in the past, Student Development (spirit and Student Government) and Student Media will submit independent annual reports.

Chapter One:

Facilities & Operations

Chapter One: Facility & Operations

A number of improvements and additions were made to the Union during the past year.

The Student Union established the Greek Center in the spring of 2006 (described in detail in Chapter 4). A conference room was converted and is very student-focused and cute, with lots of green and orange, Ikea furniture, and Greek knick/knacks and letters.

The Center for Student Involvement was first operational in early Fall 2005. The Center has truly come alive in the past year, and students recognize it as the headquarters for information about student activities. The Center has a lounge area, storage, and workspace for student groups.

Two new pool tables were purchased as demanded by students and Union employees. New, modern benches and shelving replaced outdated fixtures in the recreation area, creating more space for the tables and an updated look. The recreation area continues to be hugely popular with students, and students have expressed their gratitude that most activities are free.

An indoor electronic bulletin board that provides advertisements for upcoming student events has been installed near the Comet Café. Students learn about activities using video clips and blurbs. The union is becoming more of a multi-media center, as it should.

Small steps towards the implementation of the concept of sustainability, a broader initiative across the country in student unions, have begun with increased recycling

efforts. Recycling bins have been placed in the Union and food service areas have agreed to recycle aluminum and cardboard.

Due to low building usage during certain times of the day (and night), the decision to eliminate the 24-hour student union was made. The building now closes at 2 a.m., later than most unions in the region, with the option for any student group that wishes to have an all night event as a special possibility.

New floor mats have been purchased to professionalize the look and feel of the building and to help with mud and dirt that is tracked in every time it rains! The mats have the UTD logo on them and attract compliments from students and staff.

Space Utilization and Event Management

An important part of the operations of the UTD Union is the management of events through the room reservation process. In recent years, facility usage in the Student Union has increased. The substantial number of applications and use of space is attributed to the increase of registered student groups, department and staff meetings, special events, and programs on campus.

The Union is lacking in fully implementing the software necessary to manage room reservations. Nevertheless, the current services available online are: room reservations, request for set-up, equipment, booths, popcorn machines, and grills. Making these services available online has been due to the hard work and ingenuity of the Union staff (i.e. no software and no technology expert!).

Approximately 98% of all applications for facilities and corresponding services are submitted electronically. The need for scheduling software to manage this process

continues to be a high priority for the Union, and, indeed, will be essential to efficient service in the near future.

Through collaboration with the Records Office, planning and training for conversion to the Astra software product has begun (The Records office purchased the software independently and the Union has piggybacked onto its availability with the hope of using it as the major events scheduling product in the future.) The Student Union has taken the initiative in this process by requesting meetings and manuals from the Records Office, voicing the need to implement the web component of the product so that it can be fully utilized, and volunteering to be the first user of the software among the “event planners” group which meets periodically on campus. Two staff members (Delvora King and Mary Walters) traveled to Kansas City to receive Astra training. The Union staff recognizes that virtually all Student Unions nationally use a vendor software product to manage room reservations and that UTD must do so as soon as possible.

Other Services and Initiatives

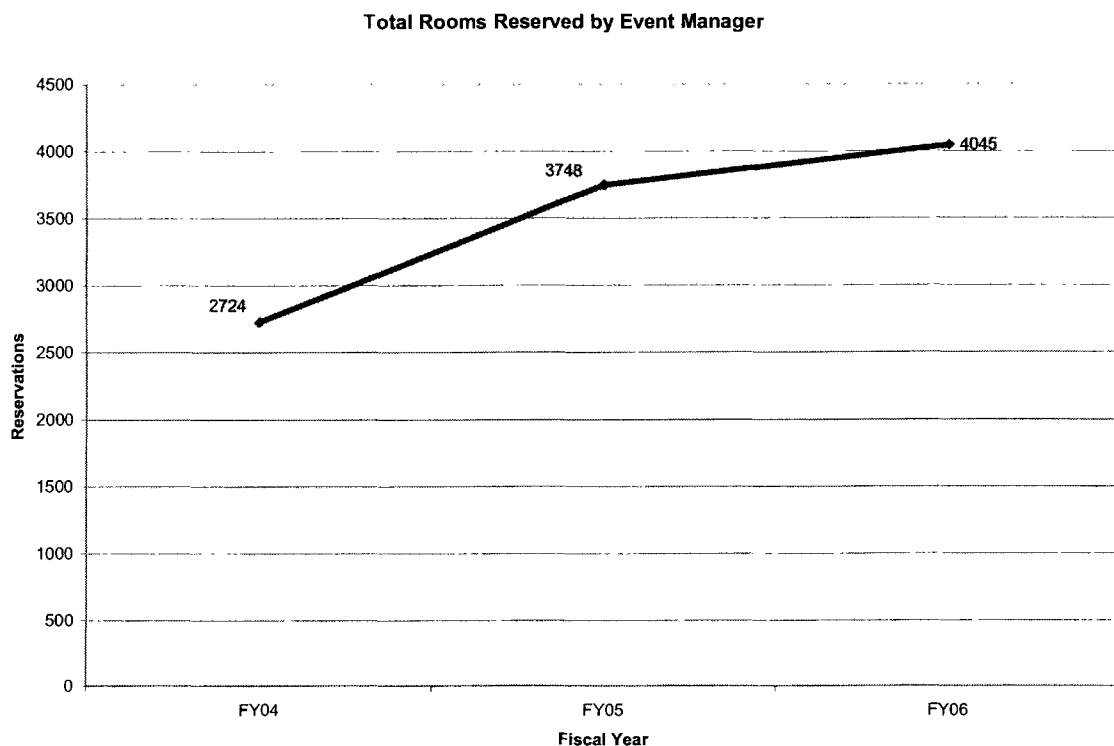
In addition to on-going room reservations, the event management staff has offered additional services primarily to student groups. A presentation is conducted at each SOF orientation meeting (5) in the beginning of the semester to teach students how to effectively work the system and avoid pitfalls. After the orientations and throughout the year, the Events Manager attends SOF meetings to remind and advise students on using facilities on campus. Her office has published “A Guide for Successful Meeting and Event Planning” which is designed to familiarize students with the reservation process and to answer common questions. The guide provides a systematic approach for successful event planning from start to finish.

Students sometimes plan events that we identify as presenting some additional or inherent risk. These events require a “risk meeting” and open hours have been set aside for students to meet with staff to manage these events.

Room Reservations Growth

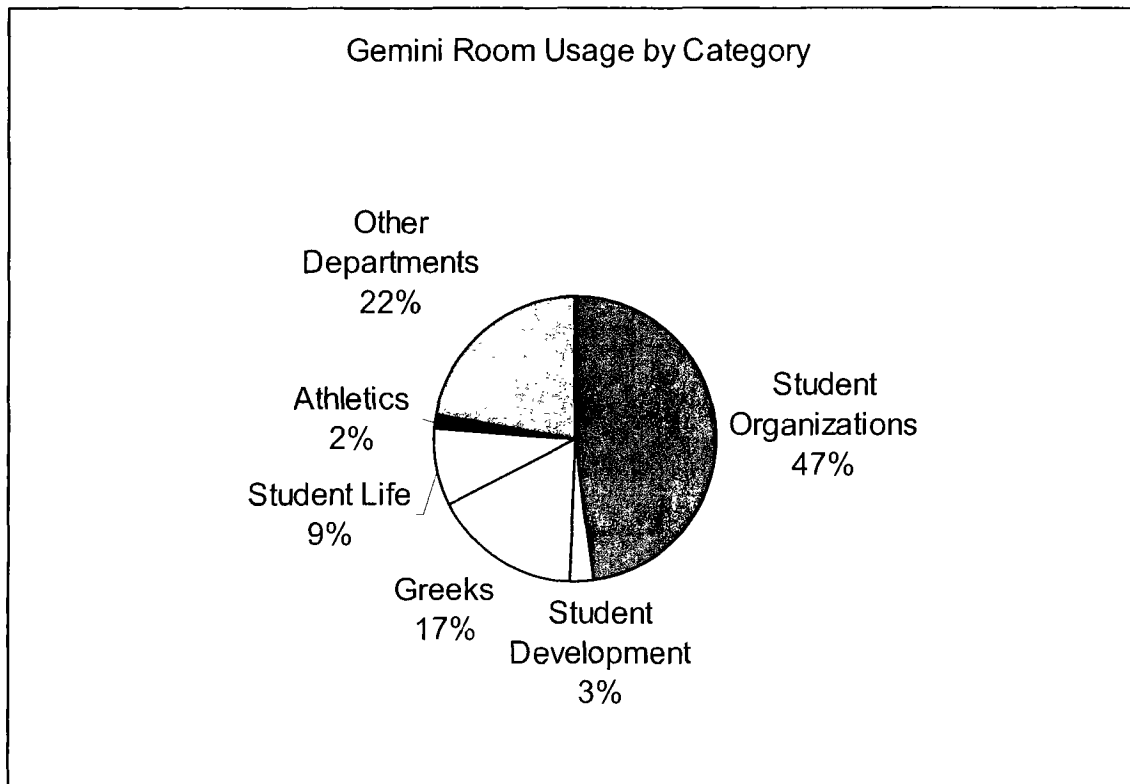
This year has seen a significant 8% increase in the number of facilities requests both inside the Student Union and in different locations on campus.

Total Reservations made by Event Manager



As illustrated in Figure 1.4, **student organizations are the primary users in the building**; however, other University departments comprise 19% of rooms reserved. In the near future, the need for space overall in the Union must be addressed, as food service areas are extremely stretched, as are common areas and meeting room space.

Room Usage by Category



Booth Usage by Category

Booths	Total
Student Organizations	264
Student Development	54
Student Government	8
SUAAB	23
Greeks	254
Student Life	60
New Student Programs	0
Multicultural Services	0
International Office	12
Health Education	5
Counseling Center	0
Athletics	20
Career Center	129
Other Departments	61
Total Inside SU	882
Outside SU	82

Chapter Two:

Programming

Chapter Two: Programming

SUAAB

The Student Union and Activities Advisory Board (SUAAB) has established itself as a high profile, better-recognized leadership entity on campus during FY 2006. With the past year's increase in quality and quantity of events, SUAAB dedicated itself to make events in FY 2006 successful and fun, introducing several new traditions. The number of events increased 20.3% over the prior year. Total attendance at events increased 21.5% over the previous year. Figure 2.1 below is a summary of SUAAB's activity for FY 2006; Figure 2.2 at the end of the SUAAB narrative gives detailed information for every event.

<i>Category</i>	<i>Total Events</i>	<i>Total Attendance</i>	<i>Total Expenses</i>	<i>Average Attendance</i>	<i>Average Cost/Person</i>
Executive Committee	15	1,528	7,889.11	102	5.16
Cultural Performances	7	1,264	9,930.86	181	7.86
Holidays	8	890	5,315.25	111	5.97
Pub Entertainment	7	1,018	9,218.28	145	9.06
Publicity Events	2	225	257.00	113	1.14
Tournaments and Games	8	570	2,679.76	71	4.76
Traditions	7	2,291	10,316.30	327	4.50
Variety Showcase	7	1,605	10,228.63	229	6.37
Major Events	1	1,800	87,005.12	1800	48.34
Summer Programs	16	1,900	4,444.09	119	2.34
Stressbusters	3	7,500	11,993.68	2500	1.60
Welcome Week	4	905	4,172.72	226	4.61
Family Day/Sounds of Class	1	328	8,910.00	328	27.16
Dead Lecture / Take It on the Road	6	377	1,866.00	63	4.95
TOTAL	92	22,201	174,226.80	241	7.85

Figure 2.1 Executive Summary of SUAAB Event Statistics, FY 2006

“Traditions” was the theme of 2004-2005, selected by SUAABies, and the students continued to expand the quantity and quality of traditions on campus. Some highlights of the year include a Spirit Day that had Dr. Daniel as well as university freshmen wearing orange and green. The most successful Homecoming Dance and Casino to date was a big hit, with over 900 people attending. The Traditions programming area had the highest average attendance among total SUAAB programs.

Another particularly successful component of SUAAB’s programs in the 2005 school year was the Variety Showcase committee. This committee was the driving force behind events such as Mystic’s Alley, Spring Carnival, and Theater in the Park. The latter not only highlighted the variety that SUAAB was capable of, but also the co-sponsoring and supporting of student organizations, having the Rat P.A.C. perform their play “A Midsummer Night’s Dream” outside on the Student Union Mall.

As mandated by the Student Fee Committee, SUAAB undertook a large event. A committee was formed to decide on the particular type and act of the large event, students were surveyed, and available acts were researched. The students decided on a combination concert/comedy show. Bringing Taking Back Sunday, who has appeared on late-night talk-shows and has had sold out concerts across the country, along with BJ Novak, the success comedian, actor, and writer for NBC’s The Office were choices that excited not only the concert committee but students in general. These kinds of events, while expensive and challenging to manage, help position UTD as a campus that can vie with UT Austin, Texas A&M, and SMU.

Springapalooza 2005 was particularly successful this year, expanding it from just one week of events to a week and a half. Students, faculty, and staff attended the events

with excitement as they “Swung Into Spring” with SUAAB. The Spring Carnival topped all events with 750 people in attendance. Reaching out to other departments on campus, Springapalooza also included the International Student Service’s Friday Coffee and brought Arts & Humanities professor Kelly Durbin on stage for the Jazz Dinner.

Continuing with the same structure presented in 2004-2005, the “Street Team” and “Stage Crew” helped grow the events SUAAB provided. Offering learning opportunities, particularly for students wishing to continue with SUAAB, these two “teams” provided considerable aid to the SUAAB Executive Board.

Figure 2.2: SUAAB Activities Overview by Committee

Executive Committee

<i>Date</i>	<i>Event</i>	<i>Attendance</i>
9/14/2005	Munchies TV Cooking Demonstration	125
9/28/2005	SUAAB General Meeting	15
10/19/2005	Student/Faculty Mixer - School of Behavioral and Brain Science	156
10/6/2005	Comedian Eric Nieves	200
10/21/2005	Benjy Davis Concert benefiting Hurricane Katrina victims, Co-Sponsored with University Democrats and student life	125
11/2/2005	DUI: A Powerful Lesson	325
11/16/2005	Student/Faculty Mixer - School of Engineering & Computer Science	315
2/13/2006	Movie, “Sisterhood of the Traveling Pants” Co-Sponsorship with Health Education in conjunction with jeans drive	125
3/3/2006	Arts and Humanities Dance Program Co-Sponsorship	300
3/13/2006	SUAAB General Meeting	20
3/15/2006	Student/Faculty Mixer - School of Social Sciences	134
4/4/2006	Miss Drag Queen 2006 Show	550

Cultural Performances Committee

<i>Date</i>	<i>Event</i>	<i>Attendance</i>
9/15/2005	Underground Poetry Circus	199
10/20/2005	Underground Poetry Circus: Hispanic Heritage Month	140
11/17/2005	Underground Poetry Circus	200

1/18/2006	Jazz in the Park Tribute to Dr. Martin Luther King, Jr.	200
2/16/2006	Underground Poetry Circus: Black History Month	200
3/16/2006	Underground Poetry Circus: Women's History Month	145
4/20/2006	Underground Poetry Circus: National Poetry Month	180

Holidays Committee

<i>Date</i>	<i>Event</i>	<i>Attendance</i>
9/14/2005	Talent Show	90
10/31/2005	Boo Bash Halloween Party	120
11/22/2005	Thanksgiving Feast	275
1/13/2006	Taboo Night	40
2/14/2006	Love Fest	150
2/28/2006	Mardi Gras Celebration	200
3/17/2006	St. Patrick's Day Celebration	200
4/1/2006	April Fool's Day Celebration	15

Pub Entertainment Committee

<i>Date</i>	<i>Event</i>	<i>Attendance</i>
9/7/2005	Sing to Win Karaoke Contest	85
10/5/2005	Dirty Dancing: UTD Nights salsa lessons	228
11/1/2005	Diwali Celebration	125
1/21/2006	Second Annual Winter Concert	130
2/7/2006	I ♥ Dorks Night: Movie, "Office Space"	50
3/24/2006	Springapalooza: Jazz Club Dinner	250
4/11/2006	70's Funk Night	150

Tournaments and Games Committee

<i>Date</i>	<i>Event</i>	<i>Attendance</i>
9/1/2005	Pool Tournament	40
9/9/2005	Sand Volleyball Tournament	40
10/28/2005	Dodgeball Tournament	60
11/18/2005	3-on-3 Basketball Tournament	100
1/11/2006	Game Night	45
2/3/2006	Spades Tournament	145
3/21/2006	Springapalooza: Ping Pong Tournament	50
4/14/2006	3-on-3 Basketball Tournament	90

Traditions Committee

<i>Date</i>	<i>Event</i>	<i>Attendance</i>
9/27/2005	Pep Rally	150
10/15/2005	Homecoming Dance & Casino	900
11/1/2005	Pep Rally	40
1/26/2006	Spirit Day	260+
2/1/2006	Comet Pride Day	250
3/23/2006	Springapalooza: 19 th Annual Casino Night	441
4/6/2006	Oozeball Tailgate Party	250

Variety Showcase Committee

<i>Date</i>	<i>Event</i>	<i>Attendance</i>
9/22/2005	Polynesian Party	200
10/18/2005	Mystic's Alley: fortune tellers and palmistry	130
11/8/2005	Dance Dance Revolution Contest	45
1/12/2006	Arabian Nights Dinner	250
2/9/2006	Magic Night	150
3/22/2006	Springapalooza: Spring Carnival	750
4/18/2006	Theatre in the Park	75

Major Event

<i>Date</i>	<i>Event</i>	<i>Attendance</i>
4/12/2006	Big Event: Taking Back Sunday and BJ Novak	1800

Summer Programs

<i>Date</i>	<i>Event</i>	<i>Attendance</i>
5/17/2006	Root Beer Floats	100
5/23/2006	American Idol Finale Party	15
5/24/2006	International Tiara Day	15
5/25/2006	Veinticinco de Mayo	200
6/2/2006	Sand Volleyball Tournament	20
6/8/2006	Karaoke Party	50
6/13/2006	Craft Night	20
6/19/2006	Fly-a-Kite Day	100
6/21/2006	European Heritage Celebration	150

6/27/2006	Block Party	50
7/3/2006	Independence Day Celebration	300
7/13/2006	Pool Party	100
7/18/2006	Snow Cones in the Comet Café	200
7/20/2006	Ice Cream Cone Day	250
7/27/2006	Late Night Pancake Breakfast	180

Stressbusters

<i>Date</i>	<i>Event</i>	<i>Attendance</i>
11/29 – 12/5/05	Stressbusters	2500
4/25 – 5/1/06	Stressbusters	2500
7/26 – 8/1/06	Stressbusters	2000

Welcome Week

<i>Date</i>	<i>Event</i>	<i>Attendance</i>
8/17/2006	Comet Nights	300
8/21/2006	Grillin' & Chillin'	175
8/23/2006	Cometville Carnival	400
8/25/2006	Pool Party	30

Family Day/Sounds of Class

<i>Date</i>	<i>Event</i>	<i>Attendance</i>
10/1/2005	Sixth Annual Family Day	384
10/1/2005	Sounds of Class opening act and prizes for carnival booths	1112

Dead Lecture

<i>Date</i>	<i>Event</i>	<i>Attendance</i>
11/15/2005	Middle East Cultures class luncheon (Prof. Nason)	30
11/18/2005	Beginning Vietnamese class luncheon (Prof. Dam)	32
11/22/2005	EE 2310 class luncheon (Prof. Dodge)	75
4/19/2006	EE 2310 class luncheon (Prof. Dodge)	125
4/27/2006	Middle East Cultures class luncheon (Prof. Nason)	35

Late Night Programs

Assessment of FY 2006 Goals

Major Goals and Priorities for FY 2006

- Continue to program late night activities on campus that students are interested in and will attend. (Ongoing)
- Increase variety of offerings to attract diverse array of students. (Ongoing)
- Continue and increase collaborative efforts with departments across campus for late night opportunities. (Ongoing)
- Improve and increase publicity for events. (Ongoing)

Fall 2005 Late Night Programs

Date	Event	Attendance
September	Pool Tournament	28
	Karaoke	85
	Movie: Revenge of the Nerds	75
	Sand Volleyball and Movie	175
	Talent Show	85
	SU All Nighter	425
	Polynesian Party	120
	Bingo Night	45
	Texas Hold'em Poker	85
October	Salsa Dancing	112
	Eric Nieves (comedy)	102
	Bowling	106
	Homecoming Week: (various activities)	700
	Underground Poetry	180
	Rocktoberfest Concert	110
	Knitting Night	19
	Dodgeball	50
	Boo Bash	125
November	Diwali Celebration	125
	Dance Dance Revolution	45
	Underground Poetry	200
	3 on 3 Basketball	100
December	Late Night Breakfast	230

Spring 2006 Late Night Programs

Date	Event	Attendance
January	Dominoes & Chess Tourney	45
	Arabian Nights	255
	Taboo Night	40
	Ping Pong Tournament	38
	Winter Concert	100
	Bowling	172
	Billiards Tournament	58
February	Movie: Crash	15
	Spades Tournament	80
	Movie: Office Space	40
	Magician	195
	Sports Trivia	45
	Valentine Event	155
	Underground Poetry	199
	ACUI Tournament - Houston	19
	Mardi Gras Event	215
March	Underground Poetry	145
	St. Pat's Day Celebration	200
	Ping Pong Tournament	50
	Spring Carnival	750
	Dodgeball	110
	Casino Night	441
	Jazz Dinner	250
	Late Night Concert on Mall	75
April	Craft Night	44
	Comedy Night	200
	70's Funk Night	150

	3 on 3 Basketball Tournament	90
	Late Night Breakfast	210

Summer Late Night Programs

Date	Event	Attendance
May	Root Beer Float Party	100
	American Idol Finale Party	15
	Tiara Day	15
	Veinticinco de Mayo	200
June	Sand Volleyball	20
	Karaoke	50
	Craft Night	20
	Fly a Kite Day	100
	Block Party	50
July	Independence Day Food	300
	Pool Party	100
	Sno Cones	200
	Ice Cream	250
	Late Night Breakfast	180

Late Night Programs Summary for FY06

Total Events	Total Attendance	Total Expenses	Average Attendance	Average Cost/Person
66	9313	\$7,878	141	\$.85

Chapter Three:

The Student

Organization Forum

Chapter Three: The Student Organization Forum

Under the leadership of the Student Union staff for the first time since its inception, SOF flourished in the past year. An intentional plan to reform both the meetings and the organization fairs paid off in more celebrated, student-focused ways. Attentive advising of the executive board of SOF has shown a dramatic change in the way the meetings are run and the Forum functions. Officers run the meetings completely, using a podium and prepared power point presentation, where in the past, the officers were more passive. Officers also hold office hours in the CSI and answer questions from student organizations directly. Pizza is provided at some meetings, providing a more social atmosphere. The meetings are now more dynamic and student-run, less dry and boring.

The organization fairs during Orientation, the Cometville Carnival, and mini-fairs were well organized and attended. Students vie for space at the fairs. New and special signage was created to make the fairs more attractive and student-friendly. Mini-fairs, offered in the first floor of the union, have been an added service that SOF has organized.

Every year a leadership banquet is given for student organization leaders. This year had a special twist when student life staff donned aprons and served as students' waiters. Students appreciated the effort and staff loved wearing their custom-made aprons!

SOF Funds Matching FY06 Highlights

Organization	Reimbursement	Amount
Graduate Translators Association	Member Reception	\$200.00
Muslim Student Association	Fast-a-thon dinner	\$800.00
Friendship Association	Chinese National Day Party	\$300.00
Black Student Alliance	BSA Shirts	\$237.34

Kappa Alpha Theta	T-Shirts	\$650.00
Institute of Electrical & Electronics Engineers	T-Shirts, Banner, and Flyers	\$600.00
Alpha Epsilon Delta	Pre-Health T-Shirts	\$490.20
Biology Club	Clowes Lecture	\$489.77
Alpha Lambda Chi	T-Shirts	\$580.00
Delta Epsilon Psi	Homecoming Float	\$282.09
Financial Management Association	T-shirts & Welcome Dinner	\$240.00
	Night With Industry	
Society of Women Engineers	Banquet	\$480.00
Fun In The College Haven	Wakeboarding Supplies	\$432.70
	T-Shirts & Gospel	
Perpetual Praise	Explosion	\$224.88
John Marshall Pre-Law Society	T-Shirts	\$213.75
Indian Pakistani Student Association	T-Shirts	\$300.00
Golden Key	Induction Ceremony	\$427.91
Student Game Developers	Developers Conference	\$800.00
Air Force Appreciation	Mercury Ad & Startup	\$212.50
Persian Culture Society	Event Audio Services	\$250.00
Students for Environmental Awareness	Earth Day Celebration	\$600.00
Bangladeshi Student Organization	Play, Party, and Gala	\$653.08
Arts & Technology Student Association	Developers Conference	\$450.44
Audiology Association	Callier Banquet	\$604.84

Chapter Four:

Greek Life

Chapter Four: Greek Life

The Greek Life program has renewed support and energy. This change has occurred with the dedication of a new full time advisor and a year of support and attention to the program from Dr. Daniel and the university's administration.

Visibility

The Greek community has become a much more visible entity. The Student Union has become a focal point for Greek Life. Banners representing each chartered national organization hang along the Galaxy room hallway and a trophy case displaying awards the organizations have received from UTD as well as their respective organizations on a national level is in the Union. Four poster cases have also been dedicated to Greek Life. These cases are key marketing tools for the program as well as the individual organizations. Information is changed monthly, with upcoming events, chapter spotlights, recruitment information and pertinent council updates.

As stipulated in the university's strategic plan, dedicated space was provided for the program. A space in the Student Development suite has become the first Greek Center at UTD. The room is equipped with a small conference table, storage for each organization, a computer station and a lounge area. Students use the center for executive and committee meetings and it serves as a central location for the Greeks to communicate, meet, and just hang out. The center also serves as the council president's work area each week while the officers fulfill scheduled office hours.

Initiatives

Greek Housing

The Greek Life program is researching and evaluating along with the University the possibility of on-campus housing dedicated to Greek students. Greek housing has been a topic of conversation for over a year. The students feel with the continued growth and the desire for a more traditional collegiate experience, housing is the next step for the program. In early fall of 2005, Dr Daniel met with the chapter presidents and asked them to put together a presentation on Greek housing. The students developed a student housing committee and began conducting research. They contacted various schools and researched statistics regarding the viability of Greek Life on campus and its effect on housing. The students met with various chapter representatives to gain insight into their needs.

Along with the students' research, the Greek Life staff conducted their own research. Campus visits and house tours were completed along with conversations with housing and property development companies, chapter advisors, alumni, and counterparts at other colleges and universities. In January 2006, the students presented their plan to the administration. The response was positive, and since then, each chapter has explained their financial capabilities and provided contact resources for their organization. The Greek Life staff continues to research the topic, considering all of the housing models, land options, financial avenues, and most especially, what will work best for UTD.

Greek Week

Greek Week is a week set aside each year for the Greeks to participate in various events and competition and celebrate belonging to a fraternal organization. In the past Greek Week at UTD meant the chapters competed against one another, that resulted is

lower attendance and unity. The students sought change and worked diligently with the Greek advisor to create a week still full of competition, but one that encouraged all Greek organizations to participate.

The Greek Week committee began meeting in October. Representatives from each chapter were invited to attend and provide any input that would help construct a successful week. The committee agreed that the week should focus on unity, community service and achievement.

Upon the recommendation of the advisor and the planning team, all of the organizations were broken up into teams rather than one against another. The students felt that it was important to begin working with each other and to learn more about each organization. The events included a spirit competition, Jeopardy with questions about UTD Greek organizations, Greek Olympics, and Greek Sing. Each event had an attendance of 115 students or more. The week concluded with the first Greek Awards Banquet, which highlighted the achievements of the organizations over the last year.

The Greek Awards were determined from packets that the students submitted in early November which were distributed to judges at UTD as well as other universities and national headquarters across the country. The awards covered the areas of scholarship, member education, community service, as well as recognizing individual members for the outstanding commitment to Greek Life and the University.

Councils

All of the Greek organizations that are recognized at UTD identify with a specific council that serves as the governing body. Currently there are four councils: National

Panhellenic Council (NPC), National Pan-Hellenic Council (NPHC), Interfraternity Council (IFC), and the Multicultural Greek Council (MGC).

NPC is the smallest of the councils with only two organizations falling under its umbrella, Alpha Gamma Delta and Kappa Alpha Theta. This is the only council that has not grown over the last 10 years. The NPC Executive Board worked with the Greek advisor to improve meeting mechanics, chapter and advisor relations, as well as focus on recruitment. NPHC is the next smallest council with only three member organizations, Alpha Kappa Alpha, Alpha Phi Alpha and Delta Sigma Theta. These organizations struggle with membership numbers, but excel in organization and community relations. The focus was to encourage their members to participate more in all Greek events, and to help facilitate a better working relationship with the other councils.

IFC is the council that oversees the four traditional men's fraternities, Chi Phi, Kappa Sigma, Sigma Alpha Epsilon, and Zeta Beta Tau. There was an urgency to complete a new constitution and bylaws as well as have them begin serving as a functioning entity. The men had been working on a constitution for close to a year. With the help of the full time Greek advisor, the men completed the constitution by January 2006 and began working on their bylaws. The members have also been focusing on accountability of each organization to help them function correctly and fairly.

MGC oversees all of the multi-cultural organizations, Delta Epsilon Psi, Omega Delta Phi Colony, Sigma Lambda Alpha and Kappa Phi Gamma. This council has seen the most change. The council currently has two chartered organizations active on campus (Delta Epsilon Psi and Sigma Lambda Alpha), one colony (Omega Delta Phi), and one inactive chartered chapter (Kappa Phi Gamma). Kappa Phi Gamma is considered inactive

because all of their known membership has graduated. With so much change occurring a stable council is needed, but unfortunately is lacking. Currently there are no executive board members and no standing constitution. The Greek advisor will be meeting with all of the organizations that fall under this council to reconstruct this much-needed council.

Educational Programming

A key element to belonging in the UTD Greek system is a commitment to educational growth and development. The Greek Life staff provided funds in order to provide various opportunities to the students.

In October 2005, the Greeks attended a risk management presentation along with RHET 1101 students and UTD Athletes. The session covered the issues of excessive alcohol consumption and its potential danger and outcomes.

Six students traveled to the Southern Greek Leadership Conference in San Antonio in March 2006. The student participated in various sessions covering many topics, including public relations, hazing, recruitment, as well sessions focused more on the student, such as networking and career development.

There is a strong desire for more educational programming for the Greeks as the program grows and changes.

Growth

The final focus for the year is growth. We have seen a continued growth in the program between recruitment numbers, campus interest, and local organizations.

Over the last year a new chapter has been chartered, Sigma Lambda Alpha and a new colony has been established, Lambda Phi Epsilon. Omega Delta Phi colony continues to grow and is estimated to be chartered by the end of 2006.

In the past year, multiple organizations have contacted the office of Greek Life stating their interest in coming to UTD. Those organizations include Sigma Chi, Omega Psi Phi, Sigma Gamma Rho, Zeta Phi Beta, and Kappa Alpha Psi.

The National Panhellenic Councils have seen a high level of growth through out the year. "Total", which is the NPC word for the cap of women in each chapter, was raised for the first time in 10 years. The chapters' total is now set at 55, but after this year's recruitment, both chapters are already a considerable amount above. Both chapters currently have 60+ members. This year their recruitment had a record number of participants.

Greek Event Attendance

Date	Event	Attendance
September		
9/6/2005	Panhellenic Recruitment Orientation	50
9/9-9/11/05	Panhellenic Recruitment	34
October		
10/4/2005	Greek Week Meeting	9
10/6/2005	Panhellenic Executive Meeting	5
10/7/2005	Interfraternity Council Meeting	8
10/7/2005	NPHC Council Meeting	13
10/11/2005	Panhellenic Council Meeting	17
10/14/2005	All President Meeting	12
10/18/2005	Greek Week Meeting	10
10/21/2005	Interfraternity Council Meeting	9
10/25/2005	Panhellenic Council Executive Board Interview	9
10/26/2005	Order of Omega Lunch	15
10/28/2005	NPHC Council Meeting	12
November		
11/15/2005	Panhellenic Council Meeting	20
11/1/2005	Panhellenic Council Meeting	18
11/1/2005	Greek Week Meeting	13
11/2/2005	Risk Management Speaker	350
11/3/2005	Order of Omega Meeting	9
11/4/2005	Interfraternity Council Meeting	15
11/4/2005	All presidents' meeting	11
11/7/2005	Panhellenic Council Executive Board Meeting	5
11/9/2005	Chapter Advisor Meeting	3
11/15/2005	Greek Week Meeting	8
11/17/2005	Panhellenic Council Executive Board Meeting	5
11/18/2005	Interfraternity Council Meeting	13
11/18/2005	All presidents' meeting	8
11/21/2005	Order of Omega Meeting	9
11/22/2005	Greek Week Meeting	9
11/22/2005	Panhellenic Recruitment Meeting	10
December		
12/12/2005	IFC Dinner	60
January		
1/7/2006	Panhellenic Executive Board Training	3
1/10/2006	Greek Week Meetings	10
1/10/2006	Panhellenic Recruitment Meeting	3

1/10/2006	Panhellenic Meeting	10
1/13/2006	Panhellenic Recruitment	25
1/16/2006	Order of Omega Meeting	5
1/17/2006	Panhellenic Recruitment Meeting	5
1/20/2006	Interfraternity Council Meetings	15
1/20/2006	Interfraternity Council Meetings	15
1/20/2006	Housing Presentation	15
1/24/2006	Greek Week Meetings	7
1/24/2006	Panhellenic Recruitment Meeting	5
1/24/2006	Panhellenic Meeting	11
1/27/2006	Interfraternity Council Executive Meeting	8
1/27/2006	All Presidents Meeting	15
1/27/2006	National Pan-Hellenic Meeting	10
1/29/2006	Delta Sigma Theta Formal Rush	25
1/31/2006	Panhellenic Recruitment Meeting	8
February		
2/4/2006	Greek Spirit Day - UTD Basketball Game	70
2/6/06	Order of Omega Meeting	6
2/7/2006	Greek Week Meeting	10
2/7/2006	Panhellenic Meeting	15
2/9/2006	NPHC Panel Discussion	25
2/10/2006	IFC Meeting	13
2/10/2006	NPHC Meeting	12
2/10/2006	NPHC Mixer	35
2/15/2006	PHC Exec. Meeting	5
2/17/2006	IFC Meeting	12
2/18/2006	Greek Spirit Day - UTD Basketball Game	65
2/22/2006	Order of Omega Meeting	6
2/25/2006	Chi Phi Regional Leadership Conference	50
March		
3/3-35-06	Southern Greek Leadership Conference	6
3/7/2006	Greek Week Meeting	6
3/14/2006	Greek Week Meeting	16
3/16/2006	Order of Omega Meeting	6
3/17/2006	NPHC Exec. Meeting	6
3/17/2006	All Presidents Meeting	9
	Greek Week events	
3/20/2006	Spirit Day	117
3/20/2006	Trivia night	172
3/21/2006	Faculty lunch	61 students, 52 faculty/staff
3/21/2006	Greek Olympics	200

3/22/2006	Chili Cook off	115
3/22/2006	Greek Sing	190
3/23/2006	Canned Food Sculptures	151
3/23/2006	Dodgeball	161
3/24/2006	Awards banquet	130
3/28/2006	Pan-Hellenic Meeting	15
April		
4/4/2006	Pan-Hellenic Meeting	12
4/7/2006	Inter-Fraternity Council Meeting	10
4/10/2006	Order of Omega Initiation	21
4/11/2006	Pan-Hellenic Meeting	15
4/11/2006	Greek Week Meeting	7
4/11/2006	Take Back the Night	75
4/12/2006	Advisor/President Meeting	22
4/14/2006	NPHC Exec. Meeting	5
4/14/2006	Inter-Fraternity Council Meeting	5
4/17/2006	Order of Omega Meeting	18
4/18/2006	Pan-Hellenic Meeting	20
4/19/2006	Pan-Hellenic Recruitment Meeting	85
4/21/2006	Inter-Fraternity Council Meeting	14
May		
5/5/2006	Inter-Fraternity Council Meeting	6
5/6/2006	Pan-Hellenic Bowling Tournament	75
5/17/2006	Marketing Meeting	12
5/19/2006	Inter-Fraternity Council Meeting	10
June		
6/7/2006	Marketing Meeting	8
6/13/2006	Greek Center Open House	25
July		
August		
8/15/2006	Pan-Hellenic Workshop	85
8/16/2006	Greek Life BBQ	300
8/18/2006	Greek Life and SG Pool Party	200
8/24- 8/28/06	Pan-Hellenic Recruitment	175
8/25/2006	IFC Meeting	8
8/27/2006	NPHC Meeting	11

Chapter Five:

Addenda

Chapter Five: Addenda

Professional Development

Phyllis Blanck, Assistant Dean of Students & Student Union Director

Secrets Revealed/Building Your Community
ACUI Region 6
Nov. 10 – 12, 2005
Tampa, Florida

Mary Walters, Director of Student Activities

Secrets Revealed/Building Your Community
ACUI Region 6
Nov. 10 – 12, 2005
Tampa, Florida

Event Management Software Training
Ad Astra Information System, LLC
July 11-12, 2006
Overland Park, KS

NACA National Conference
National Association of Campus Activities
February 18 – 22, 2006
Boston, MA

Kendra Sikes, SUAAB Advisor

NACA Regional Conference
National Association of Campus Activities
November 10 – 13, 2005
Tulsa, OK

NACA National Conference
National Association of Campus Activities
February 18 – 22, 2006
Boston, MA

Homer Salazar, Student Union Coordinator

Secrets Revealed/Building Your Community
ACUI Region 6
Nov. 10 – 12, 2005
Tampa, Florida

Enriching the Soul
ACUI National Conference
March 17 - 20, 2006
Kansas City, Mo

Delvora King, Events Coordinator

“Enriching the Soul”
ACUI National Conference 2006
March 17- 20, 2006
Kansas City, MO

Event Management Software Training
Ad Astra Information System, LLC
July 11-12, 2006
Overland Park, KS

Ray Mitchel, Student Union Coordinator

Enriching the Soul
ACUI National Conference
March 17 - 20, 2006
Kansas City, Mo

Briana Lemos, Greek Life Advisor

Association of Fraternity Advisors
National Convention
Nov. 31 - Dec. 2, 2005
Atlanta Georgia

National Pan-Hellenic Council 75th Anniversary Conference
National Conference
Oct. 19 - 23, 2005
Chicago, IL

Southern Greek Leadership Conference
University of Texas at San Antonio
San Antonio, Texas
March 3 - 5, 2006

Student Organizations

901	Criminology Club	Jujitsu Club	ROOTS
A Minor	Crimson	Kappa Alpha Psi	Rotaract
Above Reproach on Campus	Dance Club	Kappa Alpha Theta	Rugby

Accounting Honor Society	Delta Epsilon Psi	Kappa Phi Gamma Sorority, Inc.	Rugby Football Club
ACM @ UT DALLAS	Delta Sigma Theta Sorority, Inc.	Kappa Sigma	SAP Users Group
Adult Non Traditional Students	Delta Theta Chi	Kappa Upsilon Chi	SAP Users Group
African Student Union	Diamond Knights	Kendo and Iaid Club at UTD	Science & Engineering Alumni Association
Air Force Appreciation	Drum Line	Knitty Gritty	Service Learning
Alpha Epsilon Delta (pre-health)	Dynamos Sports Club	Korean Student Association	SGI-USA (Soka Gakkai Intl.-USA)
Alpha Gamma Delta	Eagle Club	Korean Undergraduate Student Association	Shri Ram Chandra Mission
Alpha Kappa Alpha Sorority, Inc.	Economics and Finance Club	Krunk For Christ	Sigma Alpha Epsilon
Alpha Lambda Chi	Empowering Readers	Lambda Phi Epsilon	Sigma Lambda Alpha Sorority, Inc.
Alpha Phi Alpha	European Club	Latter-day Saint Student Association	SJTU Alumni Association
Alpha Phi Omega	FAR Advancing further research	League of United Latin American Citizens	Soccer Fan Club
Alternative Spring Break	Fellowship of Christian Athletes	Les Fanas De L'Alliance Francaise	Social Science Graduate Students Association
American Marketing Association Collegiate Chapter	Fellowship of Christian University Students	Linux Users Group	Society for Promotion of Eastern Culture
American Production and Inventory Control Society	Females in Transition	Lock Picking Club	Society of Future Educators

Amnesty International at UTD	Filipino Student Association	Magic the Gathering Association	Society of Hispanic Professional Engineers
Apple Users Group	Film Club	Management Honors Program Council	Society of Physics Students
Arab Students Association	Financial Analysis and Equity Research	Mathematics Club	Society of Women Engineers
Art & Technology Student Association	Financial Management Association	MBA Society	Society Promoting Otaku Oriented Needs
Art of Living Club	Flag Football Club	ME-A-PH-HE-A	Sociology Club
ASHA for Education	Free State Awareness Project	Mediterranea	Sojourn Literary Arts Journal
Asian Brotherhood for the Community	Freshman Convocation Planning Committee	Men of Distinction	Sonlight
Association for India's Development	Friends in Israel	Men of Vision	Soo Hwa Kung Fu Club
Association of Computing Machinery	Friends of Falun Dafa Club	Meteor Theater	Soul Steppers
Association of Information Technology Professionals	Friendship Association of Chinese Students & Scholars	Mexicans on Campus	South Asian Religious Group
Atheists & Freethinkers Society	Fun In The College Haven	Minority Association of Pre-Health Students	Spanish Study Club
Athletes in Action	GCC Chinese Bible Study	Multicultural Greek Council	Squash Club
AUV Club	Gender GAP: A Gender Activist Project	Muslim Student Association	Student Ambassadors
Baha'i Club	Geoclub	National Association of Black Accountants	Student Animator's Guild

Bangladeshi Student Organization	Geophysical Society	National Association of Future Doctors of Audiology	Student Athlete Advisory Committee
Baptist Student Ministries	G-Force	National Pan-Hellenic Council	Student Game Developers Association
Best Buddies	GIS User Club	National Pan-Hellenic Council	Student Government
Beta Alpha Psi	Golden Key International Honor Society	National Society of Black Engineers	Student Labor Coalition
Biology Club	Grace Chinese Christian Fellowship	National Student Speech Language Hearing Association	Student Musicians Society
Biology Graduate Student Organization	Grace Christian Fellowship	Neuroscience Student Association	Student Union & Activities Advisory Board
Black Student Alliance	Graduate Christian Fellowship	New Life Volunteering Society	Students for Environmental Awareness
Book Club	Graduate Student Association	Northern Shaolin Kung Fu	Students For Kinky Friedman
Buddha's Light Young Adult Association	Graduate Student Council	Northern Shaolin Kung Fu Club	Students for Sensible Drug Policy
Buddha's Light Young Adult Subdivision of Dallas	Graduate Translators Association	Omega Delta Phi	Students for Social Entrepreneurship
Campus Badminton Association	Gun Club at UTD	Omicron Delta Epsilon National Economics Honor Society	Students Healing Our Environment
Campus Crusade for Christ	HELP Orphans Association	Order of Omega	Students in Free Enterprise
Campus Hispanic Association	Habitat for Humanity at UTD	Pakistan Student Association	Swim Club

Catholics for Truth	Health Occupations Students of America	Persian Cultural Society	Taiwanese Student Association
CFC Youth Campus Based	Hillel Student Jewish Organization	Persian Culture Society	Texas Society of Professional Engineers
Chatterazzi	History Honor Society	Phi Theta Kappa	Toastmasters
Cheer Squad	History Science Theatre	Philosophy Club	Track Club
Chemistry Student Association	HOMAGE: a gay-straight alliance	Pi Alpha Alpha	Turkish Student Association
Chess Club	Hong Kong and Friends Society	Poetry Club	U-HOPE
Chi Alpha Christian Fellowship	Indian Pakistani Student Association	Police Explorers	Ultimate
Chi Phi Fraternity	Indian Student Association	Pool Club	Ultimate Frisbee Club
Chi Sigma, Christian Sisterhood	Indonesian Student Organization	Post Baccalaureate Pre-Health Society	Ultimate Soccer
Chinese Campus Bible Study	Institute of Electrical & Electronics Engineers	Power Dancers	United Rock Musicians
Chinese Student Association of Taiwan	Institute of Internal Audit Student Chapter	Pre-Dental Club	University Democrats at UTD
Christians on Campus	Intelligent Design and Evolution Awareness Club	Pre-Law Society	University Life
Circle K	Interfaith Dialogue Student Organization	Pre-Optometry Professional Society	Untitled: A Creative Writing Club
Cohort Honors MBA Network	Inter-fraternity Council	Pre-Pharmacy Association	Urban Vibe
College Life	International Christian Fellowship	Psi Chi	Vietnamese Student Association

College Quiz Bowl	International Management Student Association	Psychology Coalition	Water Polo
College Republicans	Intervarsity Christian Fellowship	Purple Crayon Theatre Society	Women in Physics
Comet Amateur Radio Club	Intramural Sports Council	Racquetball Club	Women's Fitness
Comet Band	Inventors and Entrepreneurs Club	Rat PAC.	XX Factor: Women in Science
Comet Wrestling	Japanese Cultural Club	Real Life formerly Common Ground	Young Conservatives of Texas
Computer Game Conference Association	Japanese Karate Association	Recreational Computing Club	Zeta Beta Tau
Computer Science-Graduate Student Association	Jiangxi Student & Scholar Association	Restricted Free Agents	
Cricket Club	John Marshall Pre-Law Society	Romanian Student Association	

Publicity Samples & Photo Gallery

THE UNIVERSITY OF TEXAS AT DALLAS
PRESENTS THE

*Student Leader
Awards Dinner*

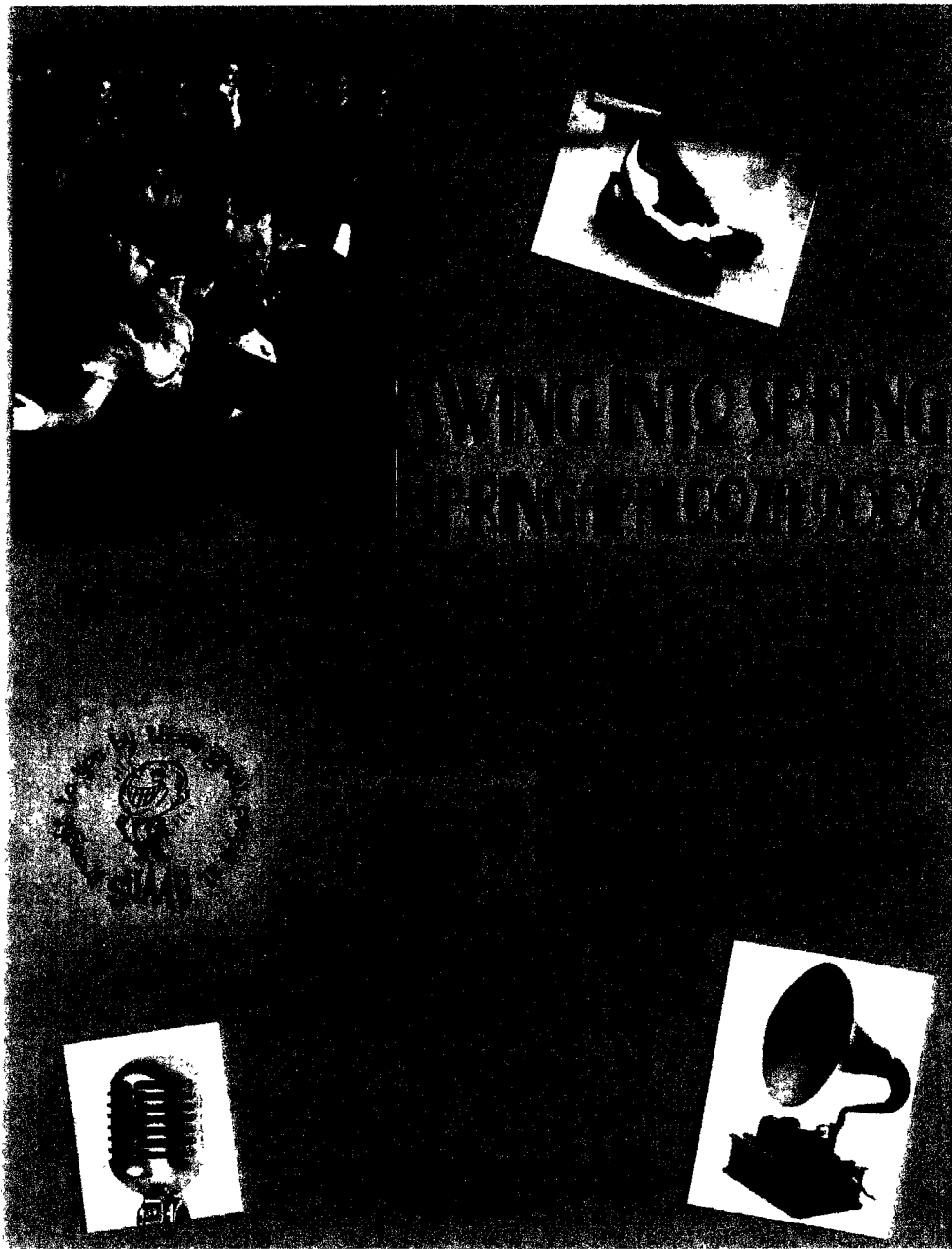
FRIDAY, APRIL 21
5:00 PM, SU 2.602

JOIN US AS WE HONOR THE BEST OF
STUDENT LEADERSHIP AT UTD

PLEASE CALL 972-883-6551 TO RSVP

THE UNIVERSITY OF TEXAS AT DALLAS IS AN EQUAL OPPORTUNITY/AFFIRMATIVE ACTION UNIVERSITY. STUDENTS WITH DISABILITIES NEEDING ASSISTANCE PLEASE CALL 972-883-6551. TX RELAY: 1-800-RELAYTX.





SUAAB, Late Night Programs & THE PUB
 wish you were here... so come join us for
 some summer fun!!



ADJUTANT

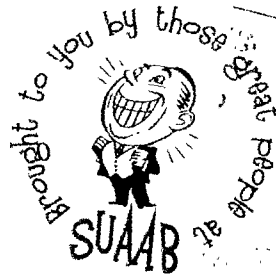
May 17: Root Beer Floats : The Patio: 12 - 1:30 pm
 May 23: American Idol Finale Party: THE PUB: 8 pm
 May 24: International Tiara Day: All Day!
 Wear your own tiara or come to the SU from 12 - 2 pm to make one!
 May 25: Veinticinco de mayo: THE PUB: 12 - 1:30 pm
 Free virgin margaritas!

rian
 the
 23
 23
 a wa
 R1
 a x
 i. a

POSTCARD

PUBLISHED BY THE AMERICAN REP. CROSS

PC June 2: Sand Volleyball Tournament: Phase 8: 10 am
 Sign up your team of 3 in SU 2.506!
 June 8: Karaoke Party: THE PUB: 8 - 10 pm
 Can you sing better than the American Idol stars?
 June 13: Craft Night: Comet Cafe: 8 - 10 pm
 Bring out your crafty side with fun easy to do projects!
 June 15: Fly-a-Kite Day: The Park: 12 - 1:30 pm
 Fly a kite and enjoy hot dogs in the park!
 June 19: Juneteenth Celebration: Comedy Rooms: 11:30 - 1 pm
 June 21: European Heritage Celebration: Comet Cafe: 12 - 1:30 pm
 June 27: Block Party: The Park: 8 - 11 pm
 Enjoy a live band and refreshments as we dance the night away!



THE PUB
 @
 UNTD

July 3: Independence Day: The Park: 12 - 1:30 pm
 Come get a hot dog and apple pie!
 July 13: Pool Party: Phase 8: 8PM
 Have a great time splashing with friends!
 July 18: Slip 'n Slide in The Park: 12 - 1:30 pm
 Have some summer fun and cool down with us!
 July 20: Ice Cream Cone Day: THE PUB: 12-2 pm
 Enjoy an ice cream cone - on us!
 July 27: Late Night Pancake Breakfast: THE PUB:
 11:30 pm

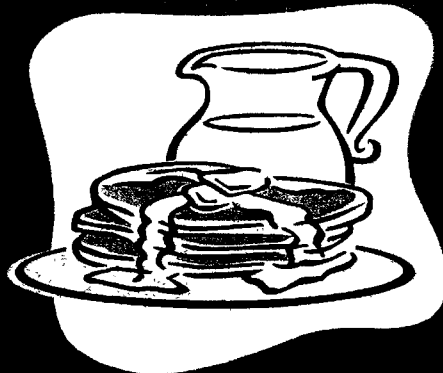
Stuart
 Tolsby Park

The University of Texas at Dallas is an equal opportunity/affirmative action university.
 Students needing assistance to attend, please call 972 883 6438 Texas Relay 800 TARELAY

LATE NIGHT PROGRAMS PRESENTS:

BRACE YOURSELF FOR
BREAKFAST

THURSDAY,
DECEMBER 1
11:30 PM
THE PUB



THE UNIVERSITY OF TEXAS AT DALLAS IS AN EQUAL OPPORTUNITY/AFFIRMATIVE ACTION UNIVERSITY
PERSONS WITH DISABILITIES NEEDING ASSISTANCE PLEASE CALL 972-883-6413.
TX RELAY: 1-800-RELATX.



